



# MEET LIFT CONTROL GATEWAY INSTALLER'S MANUAL

**ENGLISH Version**

Cod. 9701401b V09\_21

**This manual corresponds to MEET Lift Control Gateway firmware version V2.50.**

FERMAX ELECTRÓNICA S.A.U.

<http://www.fermax.com>

MEET Lift control manual available at <https://www.fermax.com/qr/meet/>

#### Copyright Notice

Fermax and Fermax MEET panel are trademarks of Fermax Electronica S.A.U. registered in the European Union and other countries.

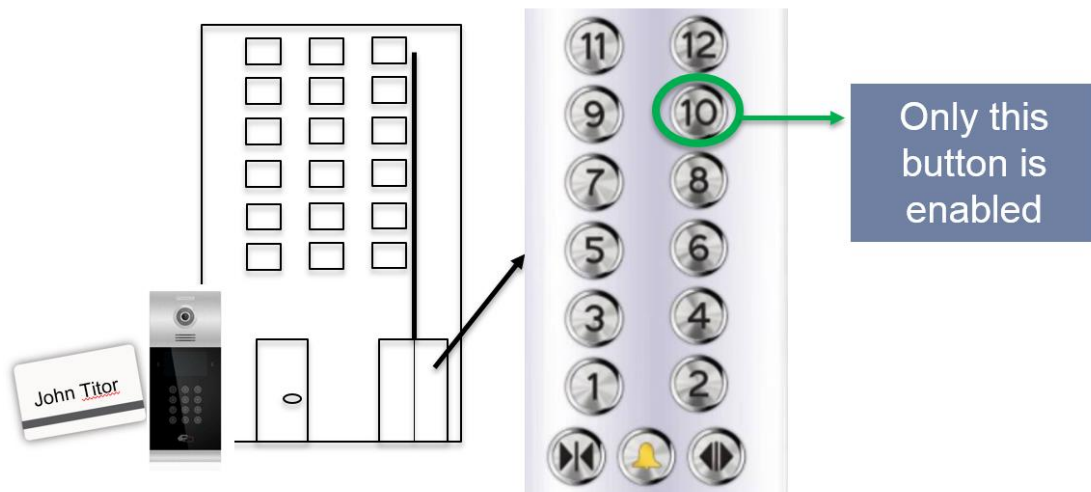
© FERMAX ELECTRÓNICA S.A.U., 2018.

## INDEX

1	Introduction.....	4
2	Connections .....	5
3	Software Installation .....	7
3.1	9545_config software installation .....	7
3.2	24661 Drivers Installation .....	9
4	Lift Control Gateway configuration (9545) .....	11
4.1	Port Configuration .....	11
4.2	Preparing the excel data.....	12
4.3	Send Data .....	14
5	Read and write the address F01616 .....	15
6	9545 Display instructions .....	18
7	Troubleshooting.....	19

# 1 Introduction

Lift control aims to enable residents/visitors to access only authorized floors through elevators using their respective cards.



## Visitor access

When a visitor calls an apartment and the tenant opens the door from the monitor, the outdoor panel uses the lift control to:

1. Call the lift to the floor where the panel is installed (where the visitor is going to take it)
2. Enable the lift to go to the tenant's floor

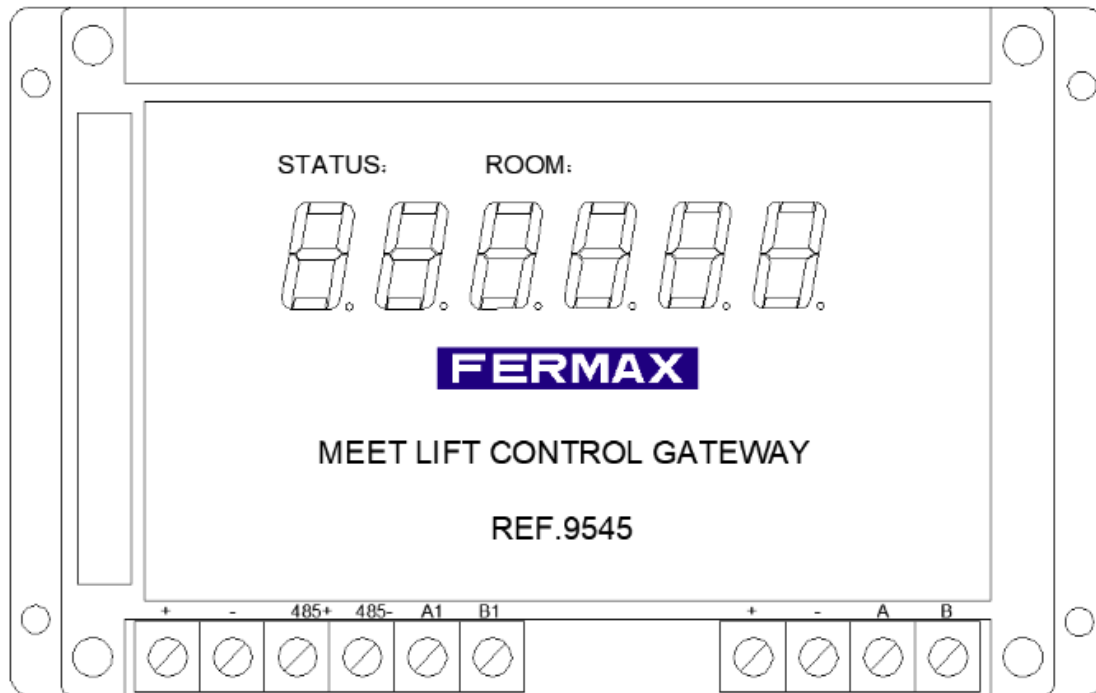
For that purpose, Ref: 9545 Meet control gateway and Ref:1616 - 10 Relay Module are used.

## Materials needed

Hardware	Software
Ref: 9545 Lift Control Gateway	Config Software 2.0
Ref: 1616 10 Relay Module	Modbus RTU Software config tool
Ref: 24661 USB to RS 485 Connector	24661 USB to RS 485 Connector Drivers

## 2 Connections

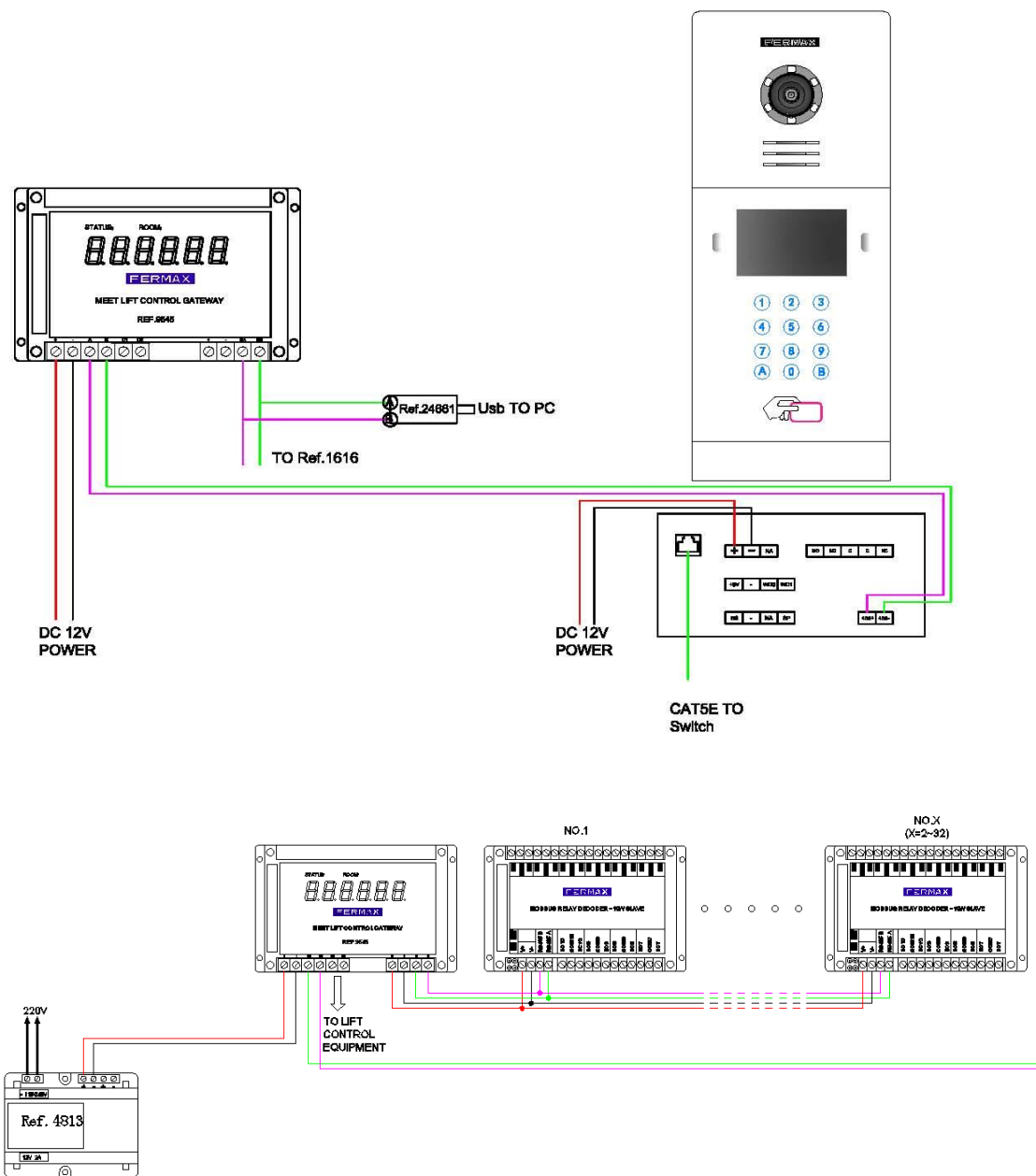
### 9545. Lift Control Gateway Connections



- **+, -:** 12 Vdc power supply input.
- **485+, 485-:** RS-485 data communication. Communicate with No.1 Panel in the unit.
- **A1, B1:** RS-485 data communication. Communicate with 3rd part lift control product
- **A, B:** RS-485 data communication. Communicate to F01616 (10 Relay Module)

## Lift Control Gateway connection to panel

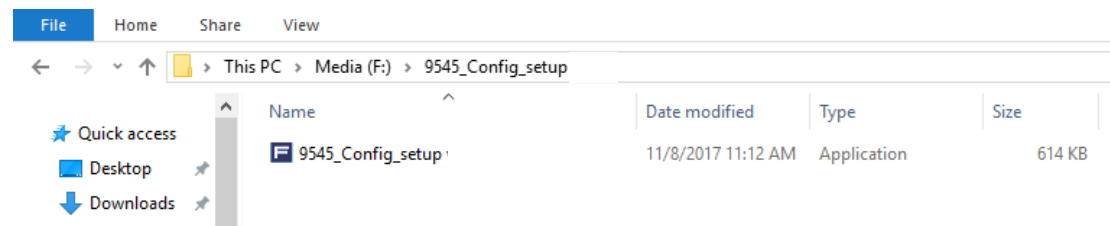
**NOTE:** The 9545 Must be connected to the panel No.1 in the block



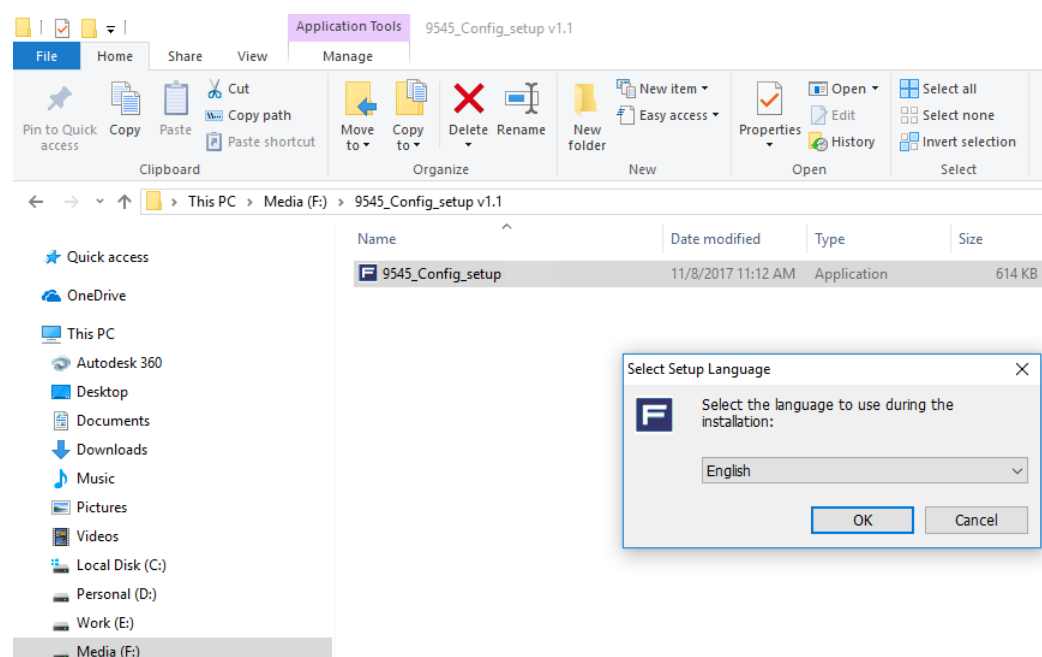
## 3 Software Installation

### 3.1 9545\_config software installation

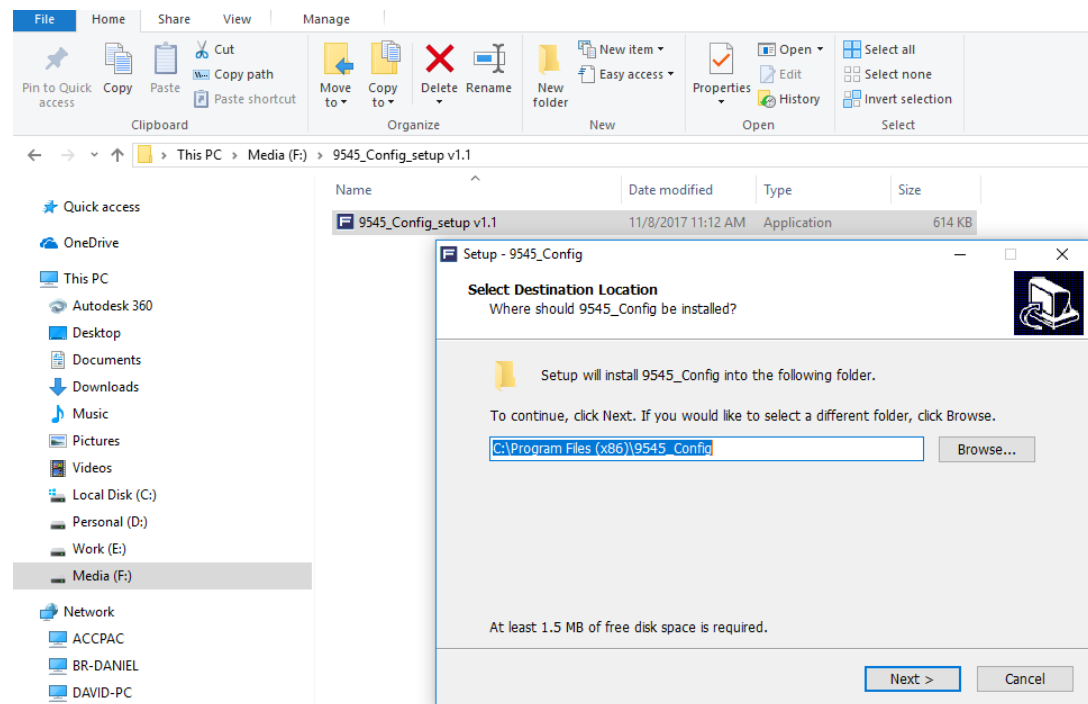
#### Execute 9545\_Config\_setup v2.0



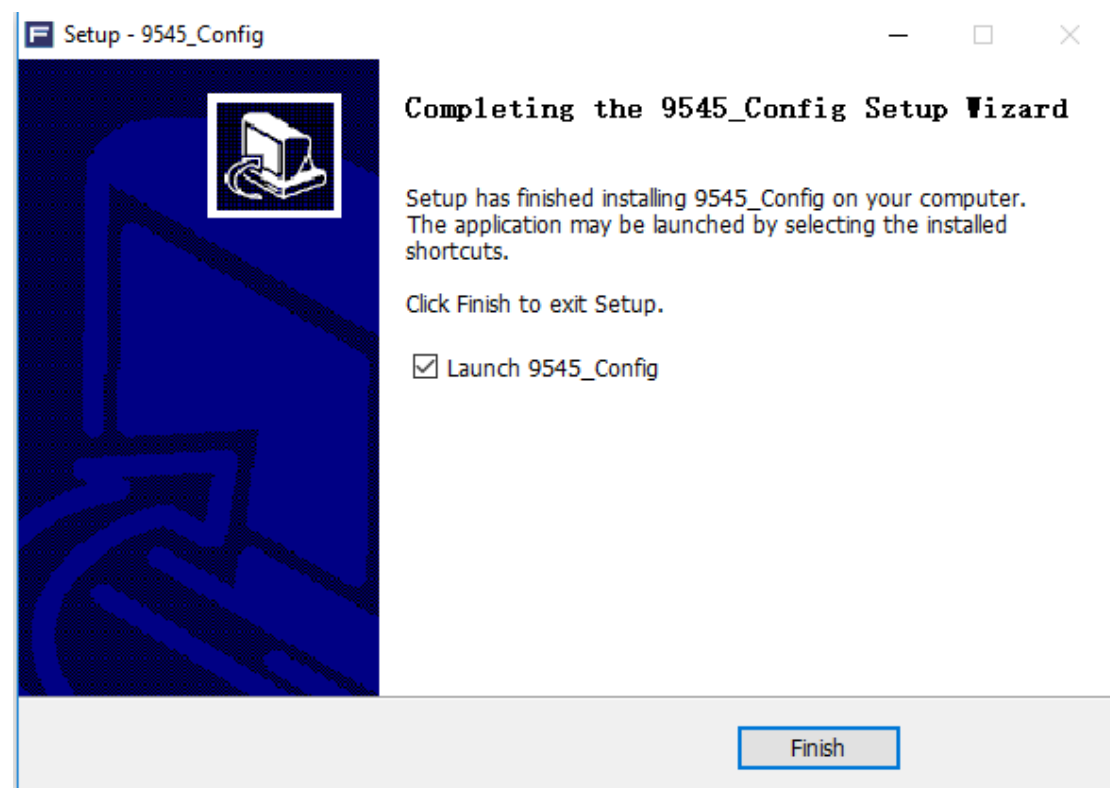
#### Select the language



## Select destination location and press Next



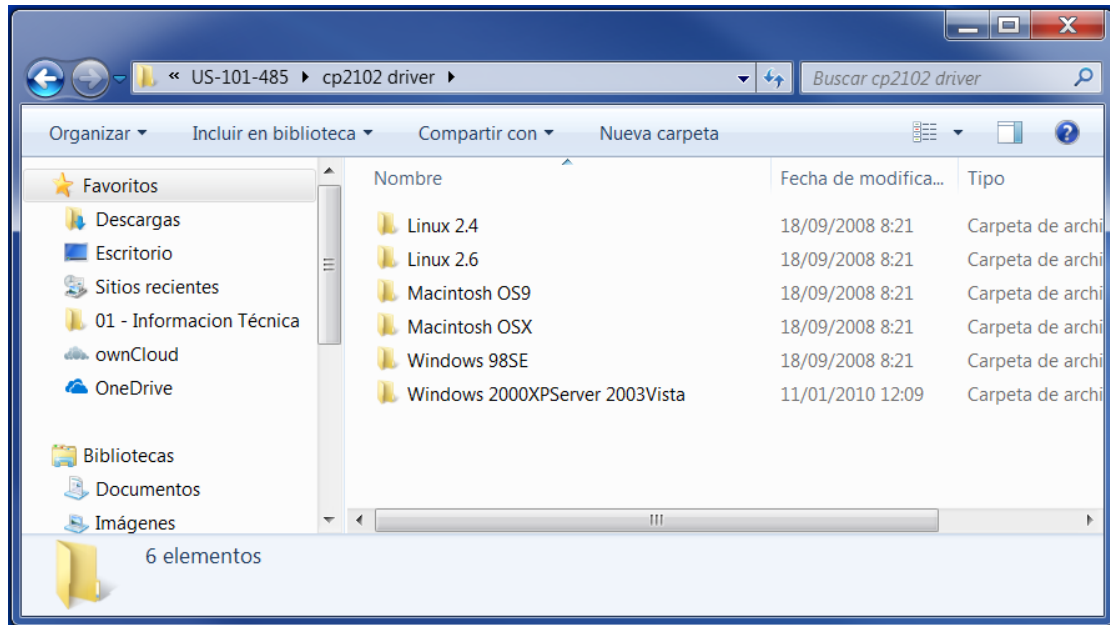
## Press finish



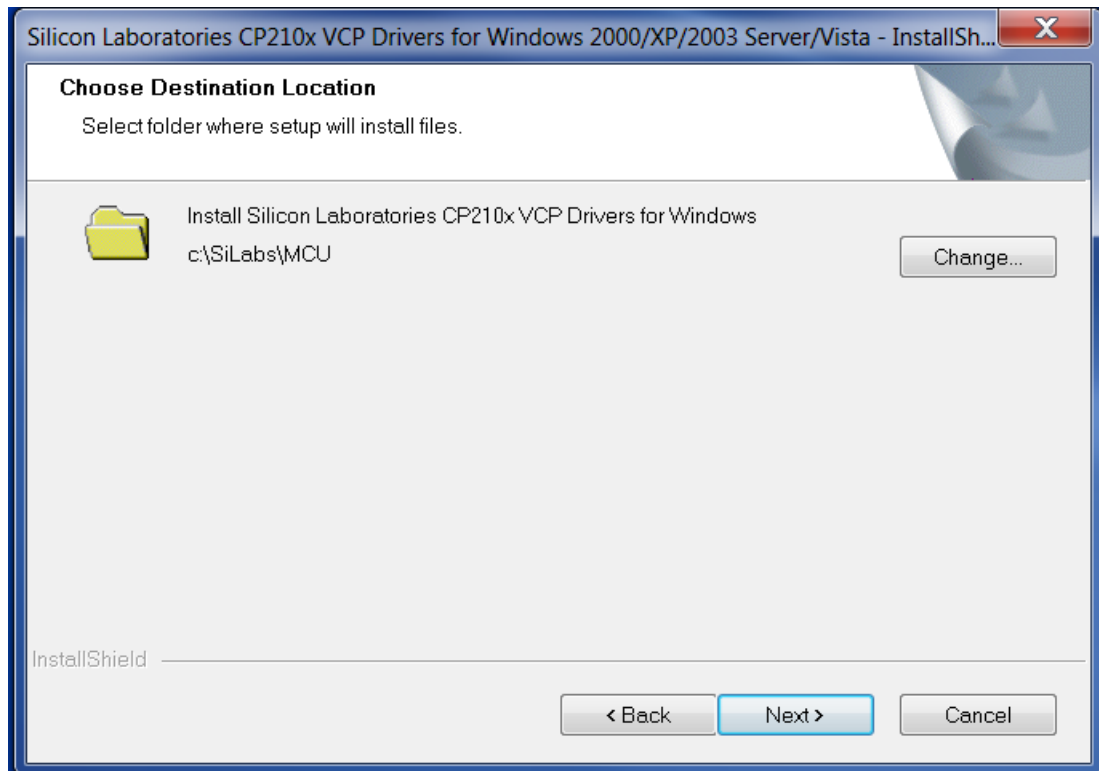


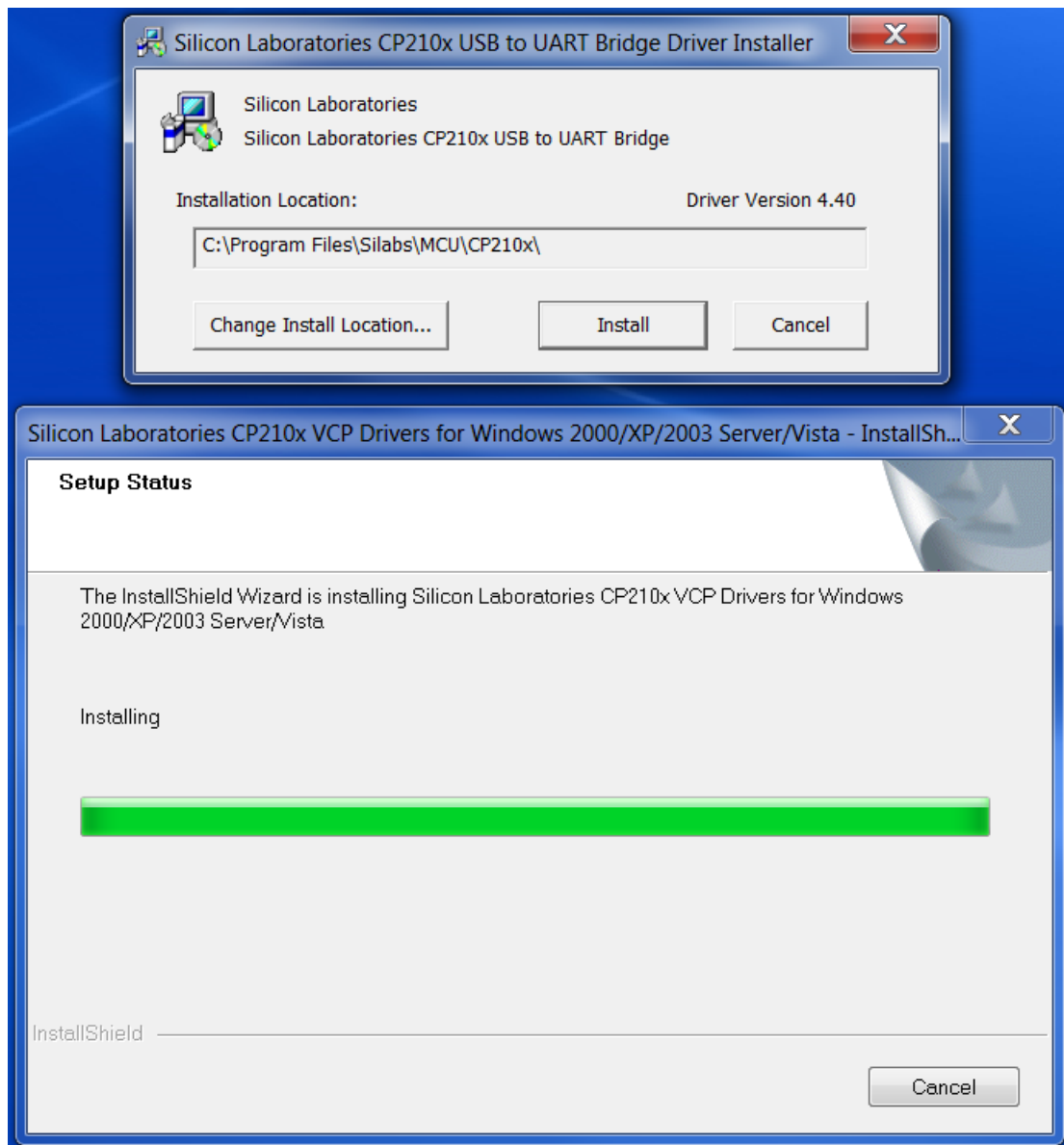
## 3.2 24661 Drivers Installation

Select the Driver according to your OS:



Install the CP210x VCP Drivers.

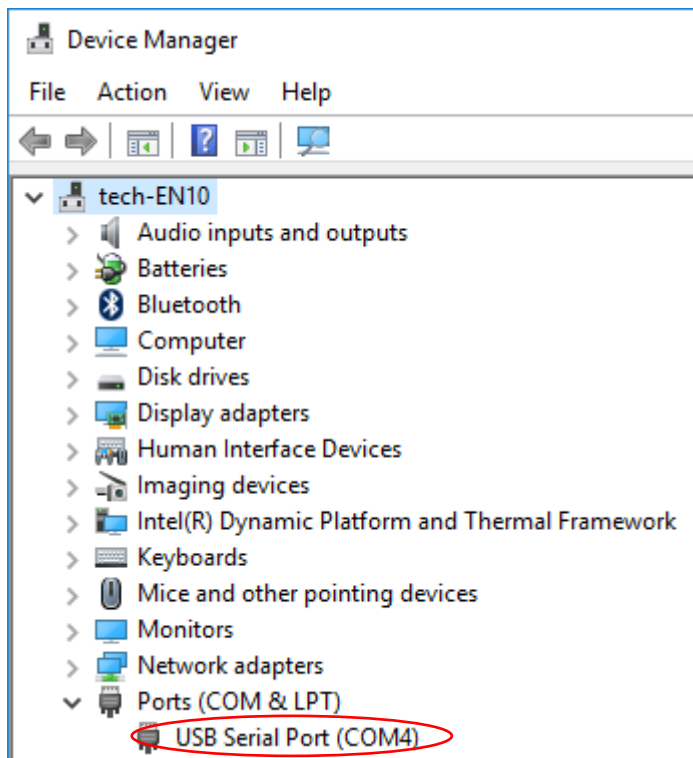




## 4 Lift Control Gateway configuration (9545)

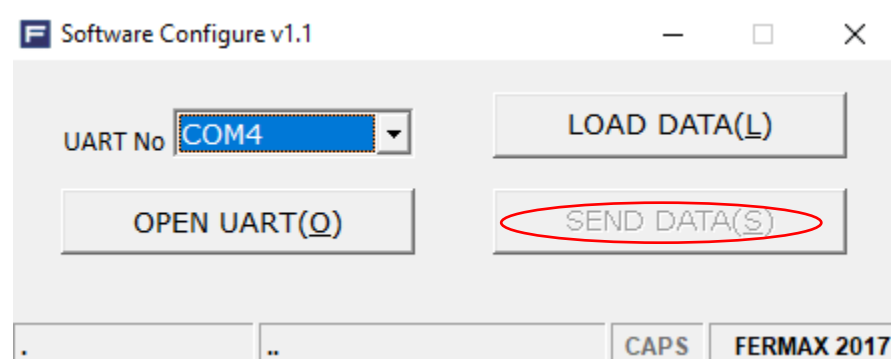
### 4.1 Port Configuration

Check which COM port has been assigned to the 24661 in the Device Manager under the Ports section.



#### OPEN PORT

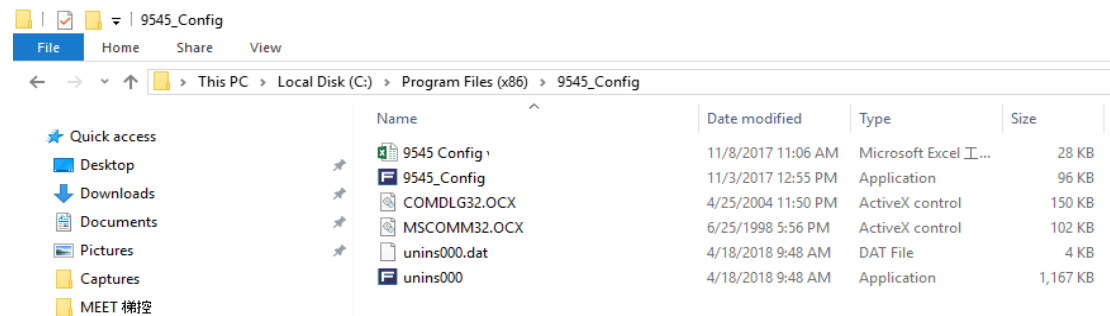
Choose the UART No. where F24661 is to be connected and click the button OPEN UART (O). Then the shadowed SEND DATA(S) button will be activated and ready to send the excel file with lift control matching information.



## 4.2 Preparing the excel data

There is an Excel template file (**9545 Config v2.0.xlsx**) in the software directory which is needed to be defined for the lift control.

There are 2 sheets in the excel file that need to be defined.



The 9545 Config v2.0 is found in the folder where the software was installed.

### Panel sheet

When the visitor calls the owner and the door lock is released the relay associated to the floor where the panel is, will be activated. This association Floor  $\leftrightarrow$  Relay no. is assigned in the excel file PANEL sheet.

It is commonly used to call the lift to the ground floor where the panel is located.

	A	B	C	D	E
1					
2	<b>Panel No.</b>	<b>Floor</b>	<b>Module</b>	<b>Relay</b>	
3	<b>Panel 1</b>	1	1	7	
4	<b>Panel 2</b>	2	1	8	
5	<b>Panel 3</b>	3	1	9	
6	<b>Panel 4</b>				
7	<b>Panel 5</b>				
8	<b>Panel 6</b>				
9	<b>Panel 7</b>				
10	<b>Panel 8</b>				
11	<b>Panel 9</b>				
12	<b>Panel 10</b>				
13					
14					
15	<b>Relay Time(external)</b>		5		
16	<b>Relay Time(internal)</b>		30		
17					
18					
19					
20					
21					

Panel sheet configured with 3 different relays for 3 different block panel.

**Panel NO:** To Indicate which Block Panel Number, from 1 to 10. "1" if only one block panel is installed.

**Floor:** Indicate in which floor the panel is located.

**Module:** Indicate the Relay Module number configured. Set to 1, if only one relay module is installed.

**Relay:** The relay port of F01616, (0-9) which will be activated when the door lock is released.

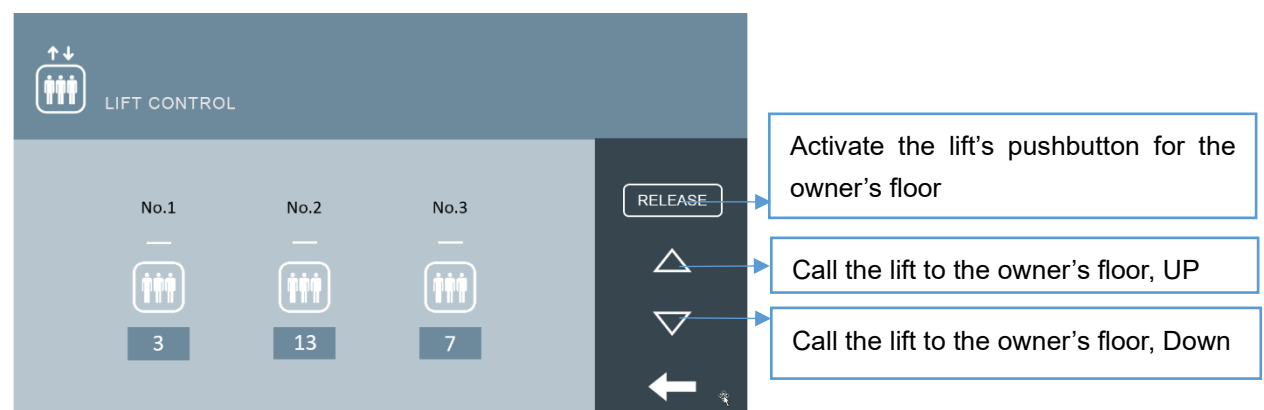
**Relay Time (external pushbutton):** Time the **Panel**, **UP** or **DOWN** relay remains active. (1-255 s)

**Relay Time (internal pushbutton):** Time the **Release** relay remains active. (1-255 s)

## Monitor sheet

When the visitor calls the owner and the door lock is released, the relay associated to the monitor's floor will be activated. This association Floor  $\leftrightarrow$  Relay no. is assigned in the excel file MONITOR sheet.

Each monitor has this menu for lift control with 3 push buttons.



	A	B	C	D	E	F	G	H
1	Function							
2	No.	Room	Module A	Relay A	Module B	Relay B	Module C	Relay C
3	1	2001	1	1	1	2	1	3
4	2	2002	1	4	1	5	1	6
5	3							
6	4							
7	5							
8	6							
9	7							
10	8							
11	9							
12	10							
13	11							
14	12							
15	13							
16	14							
17	15							
18	16							
19	17							

This sheet serves as the association for the monitor buttons to a relay in the module

Set the apartment/room number and a module and relay number for each of the buttons.

**ROOM:** Number of apartments.

**Module A:** The user touch **RELEASE** icon on MIO monitor lift Control or open door from MIO monitor will activate.

**Relay A:** The relay port of F01616, 0-9 Optional.

**Module B:** The user touch **DOWN** icon on MIO monitor lift Control will activate.

**Relay B:** The relay port of F01616, 0-9 Optional. Relay for external Down button where the owner's floor is located.

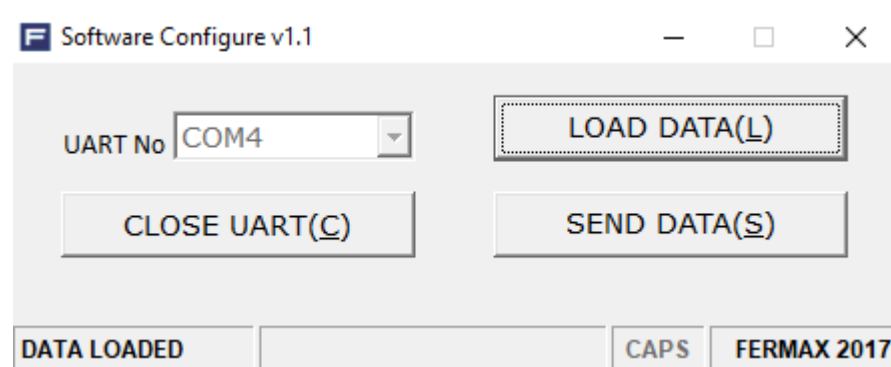
**Module C:** The user touches **UP** icon on MIO monitor lift Control will activate.

**Relay C:** The relay port of F01616, 0-9 Optional. Relay for external UP button where the owner's floor is located.

Click the button **LOAD DATA (L)**, in the open dialog box, choose the excel file and open it.

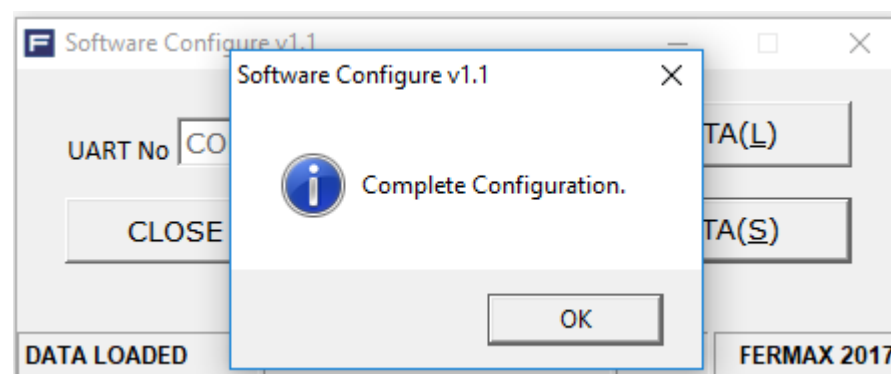
In status bar, DATA LOADED means that PC has read the data.

If there are any errors, there will be a pop-up error window to indicate what is wrong.



## 4.3 Send Data

Then click the button **SEND DATA(S)**, the data will be transferred from PC to LC gateway (Ref.9545).



## 4.4 SW1 SETTING OF LC gateway

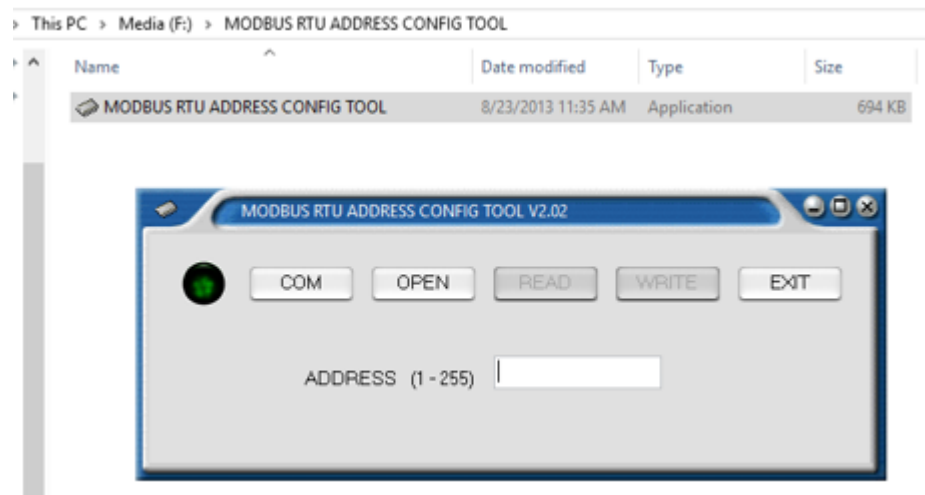
The LC gateway can receive the data from MEET 32 INPUT MODULE. The time to acquire data can be set via SW1 microswitch in the LC gateway. The LC gateway timing starts when it receives data from No.1 block panel.

When all microswitches are off, the time is 5s (default parameter).

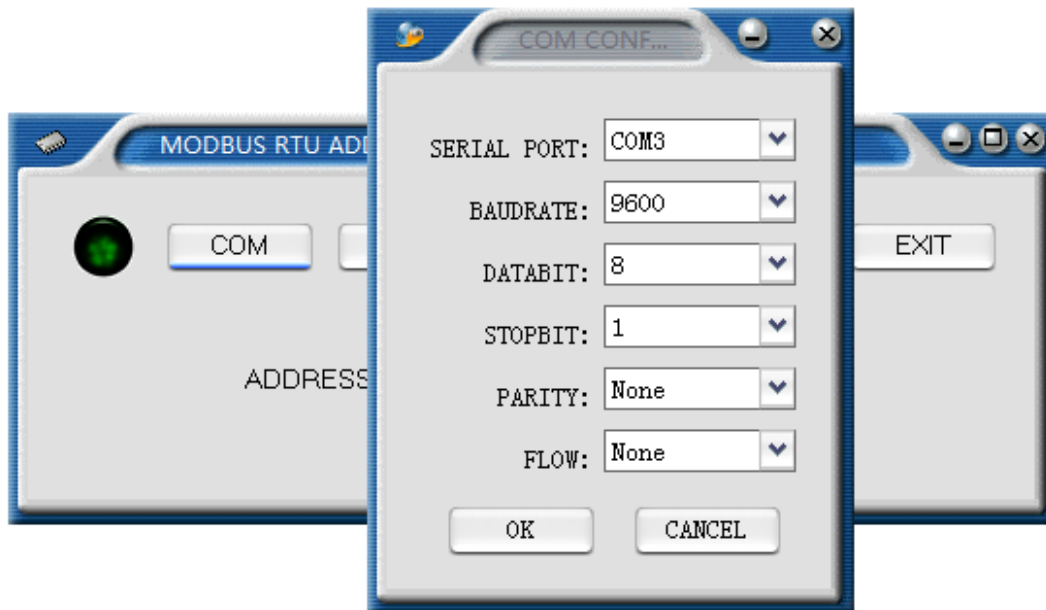
## 5 Read and write the address F01616

It is needed to set a RS485 address on the relay module.

Using a computer and RS485 adapter (for example Ref.24661) connect the RS485 interface "A" and "B" only on the module, and run the software **MODBUS RTU ADDRESS CONFIG TOOL.exe**.



Click the "COM" button, select the "SERIAL PORT" number of the RS485 adapter. Port settings to be selected as shown in the figure below.



Click the "OPEN" button, and then click the **"READ"** button to read the settings from the module. "Read parameter successfully" will be prompted. If it shows "unsuccessfully" or "timed out", please check the connection and the port settings in the computer and in the software.

Modify the new address from 1~31\*.

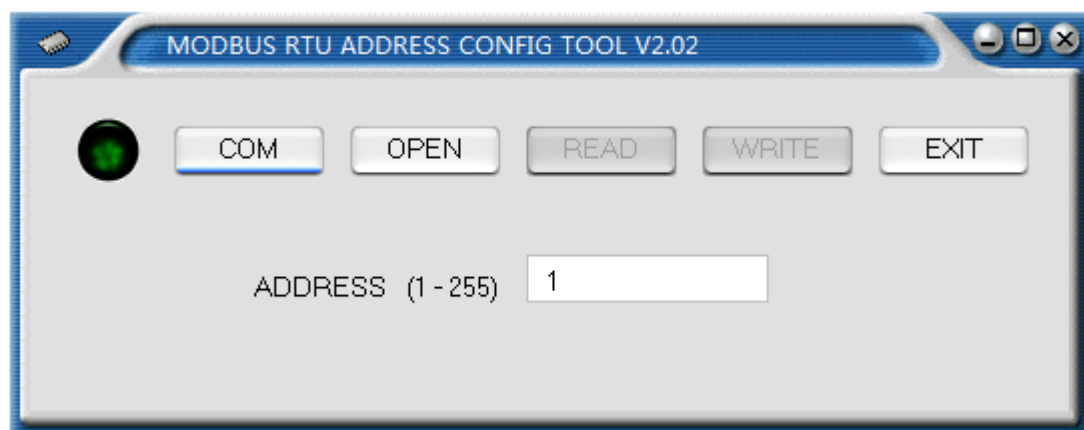
Note: \*The software displays 1 ~ 255, but the system only works with 1 to 31.

Click the **"WRITE"** button to write the new address to the module, if "Write parameter successfully." indicates that the address writing has been done properly. If "unsuccessfully" or "timed out" is indicated, check the connection and the port settings in the computer and in the software.

The module's RS485 address is set up.

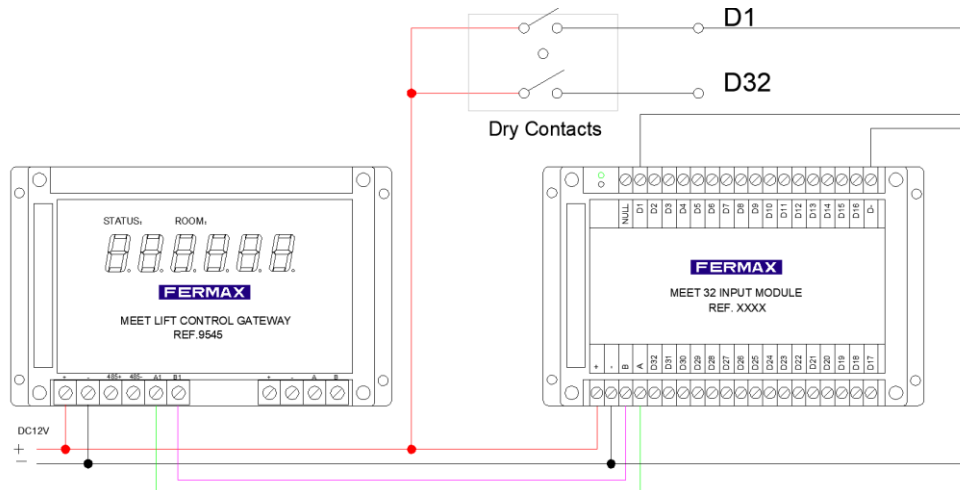
A restart is needed in order to apply the changes done.





## 6 MEET 32 INPUT MODULE

Meet 32 input module receives dry contact signals from the elevator system. The delay time of dry contact activation needs to be longer than 4s.



## 7 9545 Display instructions

After the configuration is done, the panel and MIO monitor can be operated.

This device has 6 digital number on the cover. It can display the COMMAND information and the FLOOR + ROOM information of the house owner.

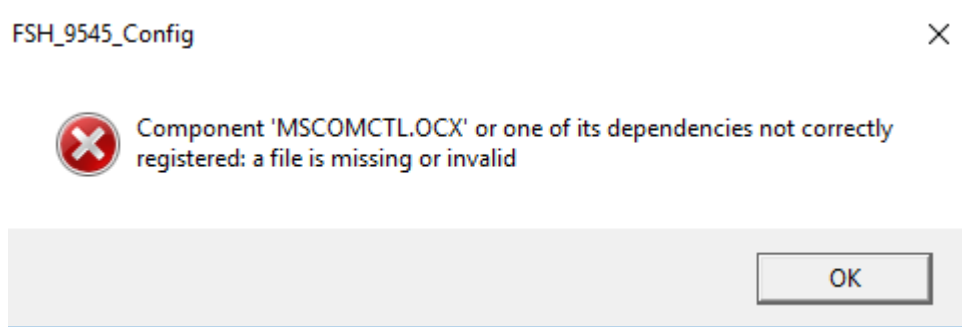
The Lift Control gateway will send a message to F01616, to activate the corresponding relay.

CMD number	instruction	Remarks
03	Household Up call	Household call LIFT, uplink
04	Household Down call	Household call LIFT, down
05	Household Release Lift	To grant authorization to the lift's internal button corresponding floor.
06	Visitor access, owner opens door from the monitor	Floor button on the lift will be enabled based on the relation of the with the apartment and the apartment's floor number.
08	Household brush card unlock	Floor button on the lift will be enabled based on the relation of the owner with the apartment and the apartment's floor number.
09	Household face unlock	Floor button on the lift will be enabled based on the relation of the owner with

		the apartment and the apartment's floor number.
--	--	---

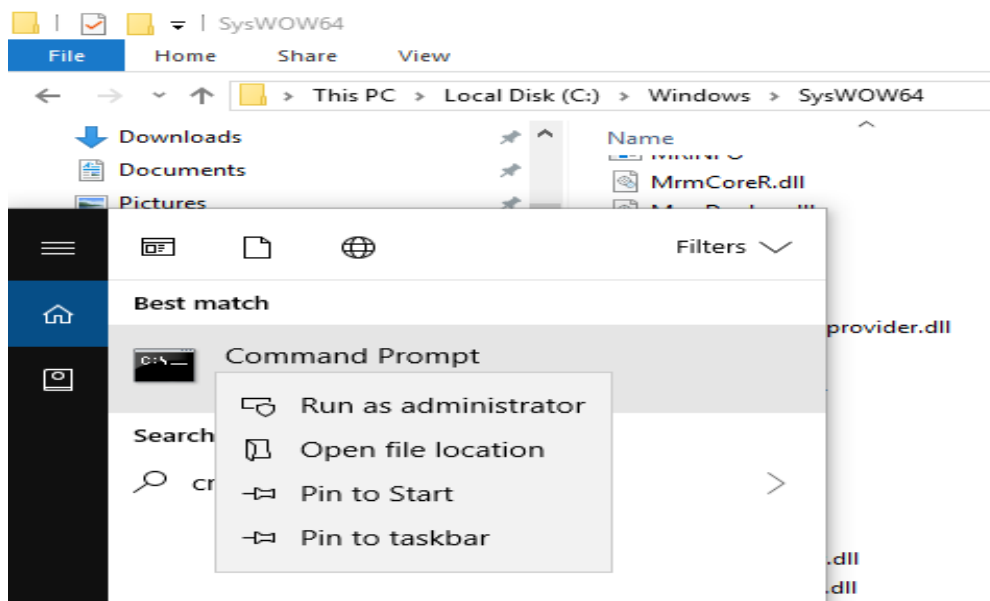
## 8 Troubleshooting

When running 9545\_config program in some computers the file MSCOMCTL.OCX information is missing.



### Solution

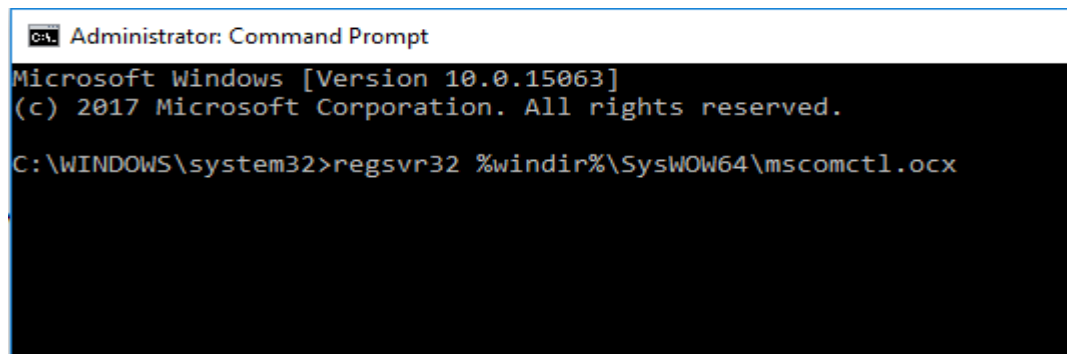
- Copy file MSCOMCTL.OCX to Folder.  
32-bit OS  
C:\Windows\system32  
64-bit OS  
C:\Windows\SysWOW64
- Command Prompt Run as administrator.



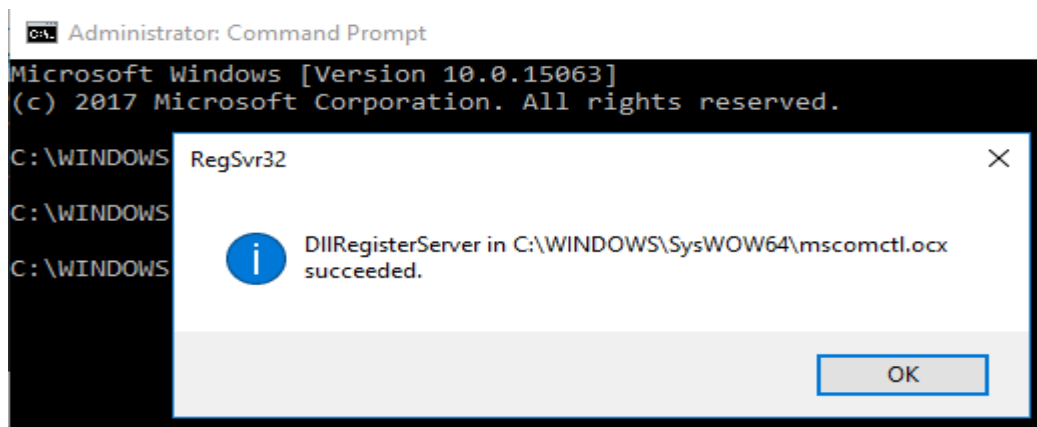
- Enter the following command code:

32-bit OS: regsvr32 %windir%\system32\mscomctl.ocx

64-bit OS: regsvr32 %windir%\SysWOW64\mscomctl.ocx



```
Administrator: Command Prompt
Microsoft Windows [Version 10.0.15063]
(c) 2017 Microsoft Corporation. All rights reserved.
C:\WINDOWS\system32>regsvr32 %windir%\SysWOW64\mscomctl.ocx
```



**NOTE:** If the error is about other OCX files, use the same method stated above. Just change the corresponding files when entering the command code.