

BASIC SMILE VDS MONITOR

INSTALLATION AND USER MANUAL

ENGLISH

CONGRATULATIONS ON PURCHASING A QUALITY PRODUCT!

Fermax electronics develops and manufactures renown systems that meet the highest design and technology standards.

Your FERMAX video door entry system will allow you to communicate with the entry panel, see who is calling you and open the front door if you wish.

We hope you enjoy its range of functions.

www.fermax.com.

BASIC SMILE VDS Monitor

Code 97711lg V09_15

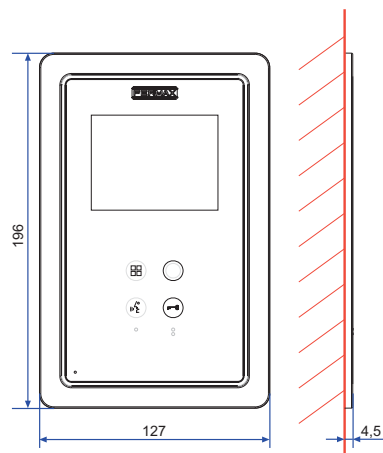
INDICE - INDEX

SMILE MONITOR	4
Measurements: built-in/surface monitor	4
Installing the Monitor	5
Wiring	8
Available Functions	10
Buttons	11
Technical Characteristics	13
Programming the monitor	14
- Option 1: From Panel + Monitor	14
- Option 2: From the Monitor	16
Programming: Administrator Menu	17
- Access the Administrator menu	17
* a) Code options	18
* b) Configuring conversation mode	24
* c) Images	25
* d) Date and Time	25
* e) Functions	25
* f) Parameters	37
* g) Resetting parameters	39
Adjustments: Video and Audio	41
- Video: Brightness - Contrast - Colour	41
- Audio	43
Programming: User Menu	44
* a) Tone	45
* b) Configuring alarms	47
* c) Date and Time	47
* d) Administrator Menu	47
- Description of functions	47
* 1. Do not disturb mode (cancel call tone)	47
* 2. Door bell	48
SMILE Monitor	49
- Buttons	49
- Operation	52
- Monitor cleaning	55

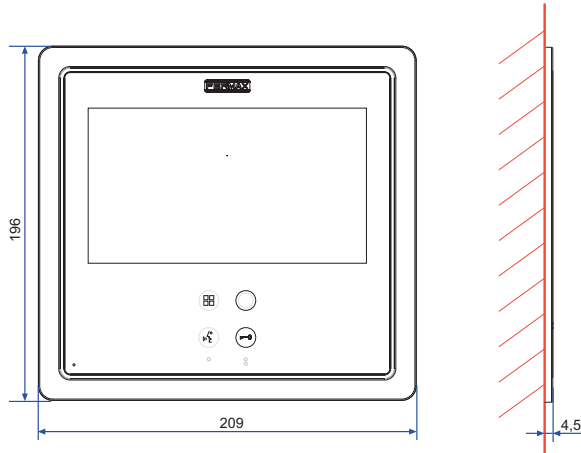
MONITOR MEASUREMENTS: BUILT-IN

Measurements in mm.

SMILE 3.5" Monitor



SMILE 7" Monitor



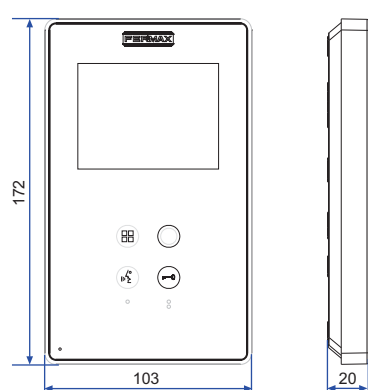
Fermax built-in 3.5" monitor ref. 6546 (Height x Width x Depth.):
186 x 116 x 46 mm

Fermax built-in 7" monitor ref. 6551 (Height x Width x Depth.):
186 x 198 x 46 mm

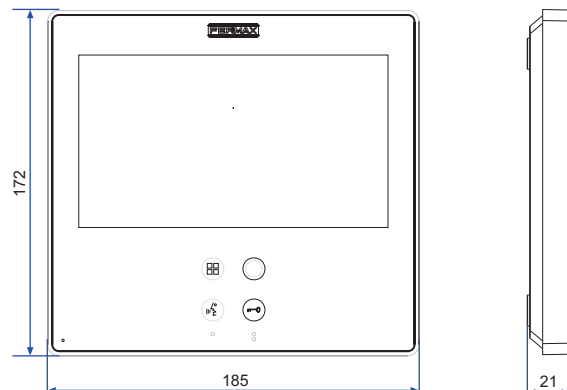
SURFACE MONITOR MEASUREMENTS

Measurements in mm.

SMILE 3.5" Monitor



SMILE 7" Monitor

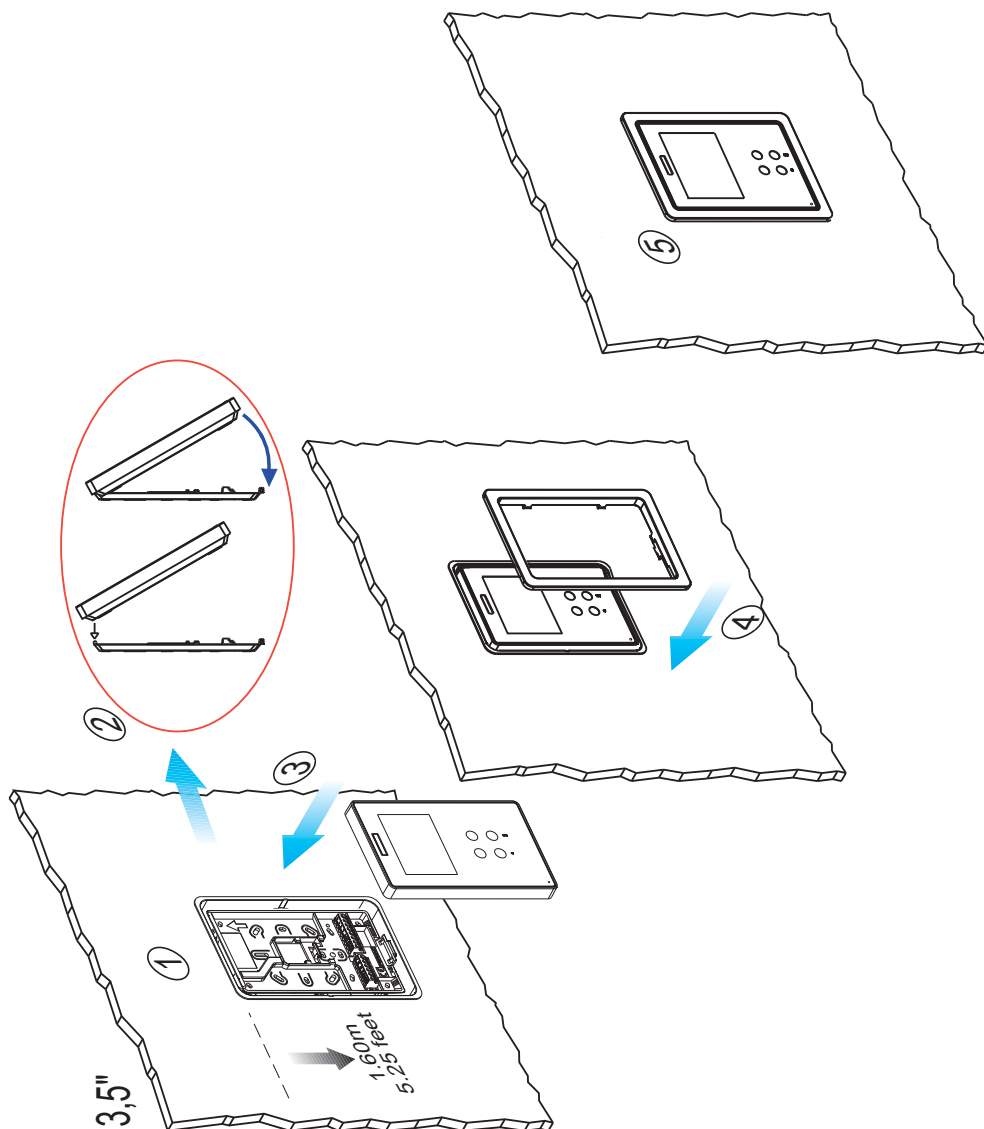


Note:

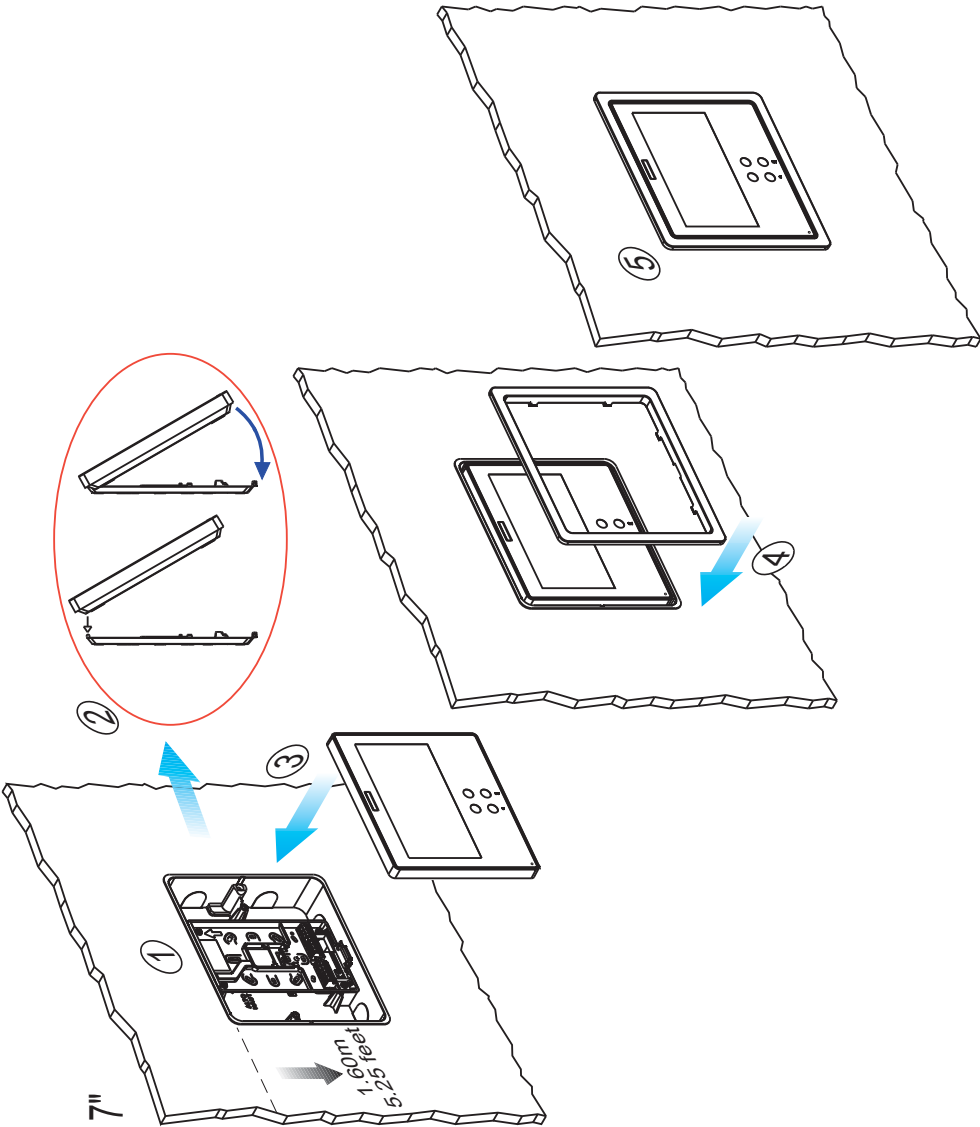
Does not require a decorative frame. See installation.

INSTALLING THE BUILT-IN MONITOR

SMILE 3.5" Monitor

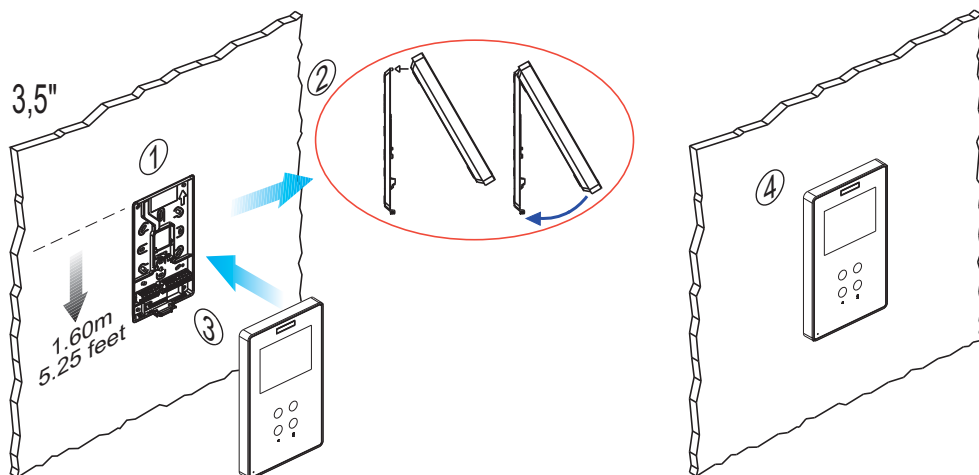


SMILE 7" Monitor

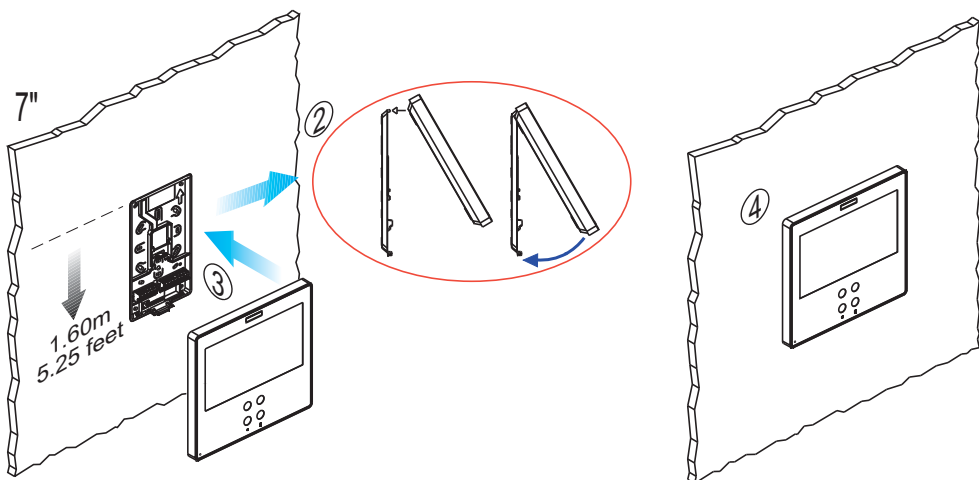


INSTALLING THE SURFACE MONITOR

SMILE 3.5" Monitor



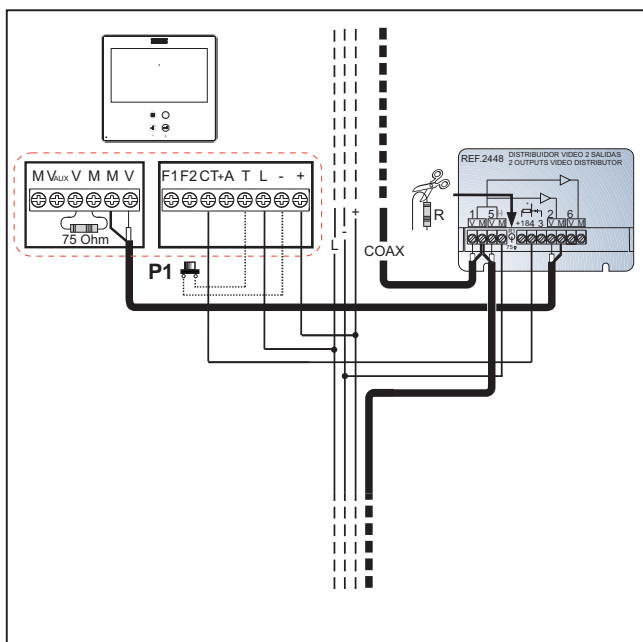
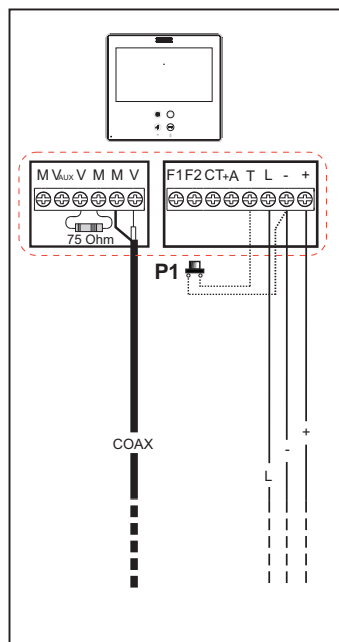
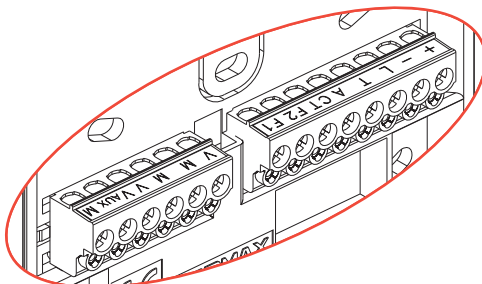
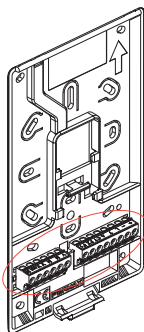
SMILE 7" Monitor

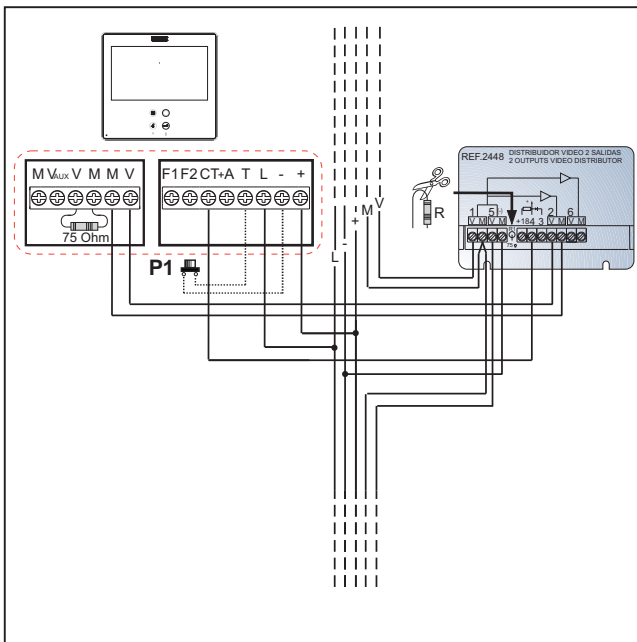


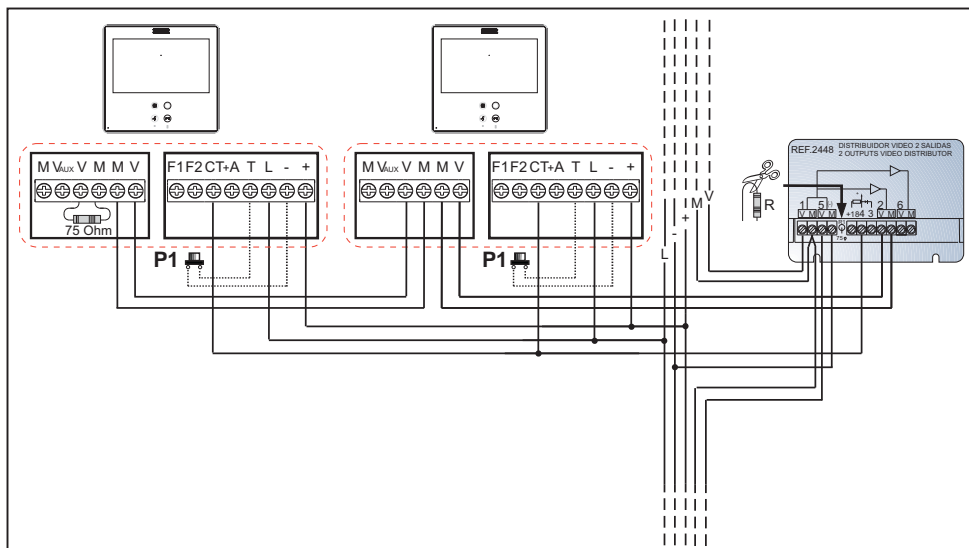
Connection

- Video terminals:
 - V:** live
 - M:** mesh
 - CT:** camera Activation (12 Vdc).
 - VAux:** auxiliary video input (CCTV camera connection).
- Connection Terminals:
 - +, -:** 18 Vdc power supply.
 - L:** data bus.
 - F1, F2:** additional functions. See programming chapter.
 - T, -:** call button connection for residential door (**P1**)
 - +A, -:** call extension connection ref. 2040, light and bell activator ref. 2438, etc...

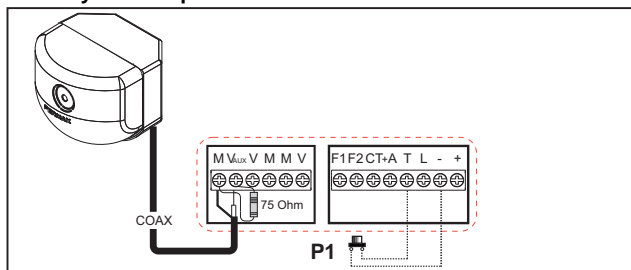
Monitor Connector







Auxiliary video input

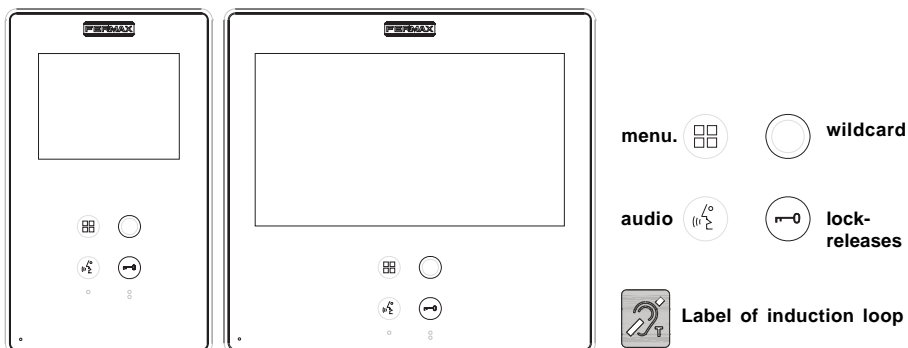


Available functions

The functions available on the Smile VDS Basic Monitor are summarised in the following list:

- It has capacitive buttons.
- Open door.
- Call to guard.
- Call Volume Regulation.
- Call disconnection (Do not Disturb).
- Ringtone Selection (5 options).
- Doorbell.
- Programming via the terminal and via the entry panel.
- Audio Volume Regulation
- Configuration of Parameters via screen menu (OSD).
- Lift Control.
- Brightness, contrast and colour settings.
- Auxiliary video input (CCTV camera connection).
- Programmable shortcut buttons. The idea is to provide temporary additional buttons, not visible, in order to access direct functions. These functions can be configured by the installer and are displayed on the TFT.
- Induction loop depending on model.

SMILE MONITOR



Buttons

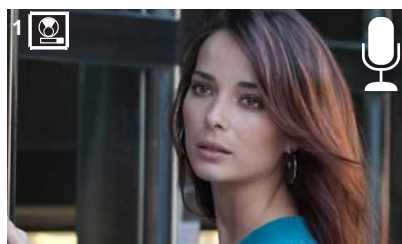


Audio and Hang-up Activation Button

- On receiving a call (the user has 30" seconds to answer before returning to standby. During this time the blue led audio button will blink to report a pending call to answer), press this button to talk to the guest. The audio channel is opened from street to residence, (the blue led on the audio button lights up steadily to indicate that it is in a conversation with the street and anything said will be heard here), this works with handsfree.
- Press to complete the communication, (upon completion the blue led audio light turns off again). The monitor's default internal timer is 90 seconds).

Notes:



- The conversation is private, no other terminal can hear it.
- "Handsfree" mode is the default mode.
- While the audio channel is open the input audio can be regulated. See the corresponding chapter on: "Audio Adjustments."
- If the monitor is configured with the conversation in "simplex mode," press the audio button to talk and release it to listen, (upon receiving the call, the blue led audio button will blink to report a pending call to answer), once we open the channel we will have audio in the monitor direction (the blue led audio will remain lit), when we press the audio button we will change the communication direction. The icon will indicate the channel we have activated at each moment (upper right corner of the monitor). The input channel volume is always adjustable during the conversation.






- There is a function configured by the installer to activate the audio channel automatically upon receiving the call. **See chapter b) Configuring conversation mode.** In this mode the conversation will finish as usual by pressing the AUDIO button or after 90".



Wildcard button: Auto-Start / Main-Secondary Camera Selection.


- With the monitor on standby, press and hold the wildcard  for 1 second to switch the monitor on manually. To activate the audio, press the audio activation button .
- With video, press and hold this button for 2 seconds to sequentially select between the main camera and the secondary camera (where one exists).

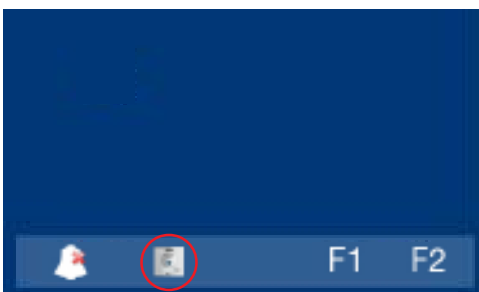
Notes:

- The wildcard button  by default is for autostart, (even though you can program it with another function, see chapter: **e) Functions.**
- If the channel is busy an error tone "BEEP" will be generated and auto-start will not activate, nor will the call to the guard.
- The auto-start function is always used on the main panel except where a call is received on the secondary panel. Once the conversation is over, auto-start will activate on the secondary panel for 30 seconds. After this time it will activate on the main panel.
- Entering in a menu button for the first time, the auto-start button will appear as a shortcut button, however, this function is also available as a wildcard , having auto-start in both is an exception made for recently manufactured monitors. You can perform an auto-start (function available on some models):
 - Wildcard button  or
 - By pressing the shortcut button or
 - By selecting the icon of the auto-start function on the menu.



By the MENU.

(Pressing "Menu" for 3 seconds. ).



by Shortcut buttons

(Short press "Menu" ).



Lock Release / Call Guard Unit Button.

- Pressing this button whilst communicating with the Entry Panel will activate the *lock release*.

Note: The icon will indicate the channel activated at each moment (upper right corner of the monitor).



- Pressing this button whilst the monitor is on standby will result in a *call being made to the guard unit* (where one exists).

Note: If the channel is busy an error tone "BEEP" will be generated and the call to the guard will not be made.

- The option of activating an output terminal (F2), once the lock-release is activated.

Note: Optionally, you can activate an output terminal (F2), if configured by the installer, once the lock-release is activated. This output remains active while pressing the button. See chapter: **e5) Auxiliary unction F2).**



Button Menu: Adjustments and configuration.

- In order to access the Administrator menu, from which you can configure the monitor according to the installation's needs, and the user menu, from which you can access the user's customised settings.

Note: When communicating or only with the video, by pressing the Menu button twice you can view the shortcut buttons.

Induction loop

This function is available on depending model.


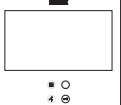



Including induction loop. There are identified with a label.

- Includes an induction loop which interacts with audio devices used by the hearing impaired.

Note: In manual audio devices Digital Mode should be configured.

TECHNICAL FEATURES

3,5"		7"		Power Supply	18 Vdc	
		Maximum Consumption		3,5"	7"	
		standby		29 mA	26 mA	
		video		225 mA	450 mA	
		audio + video		550 mA	750 mA	
		audio + video with induction loop 		1000 mA	1200 mA	
Operating Temperature				[-5, +40 °C]		
Humidity				[5% - 95%]		
OSD screen		TFT 3.5"		Hor.: 320 Line TV		
Resolution		TFT 7"		Ver.: 240 Line TV		
				Hor.: 800 Line TV		
				Ver.: 480 Line TV		
Video signal: Compound signal 1 Vpp 75 Ω, 7 Mhz.						

PROGRAMMING THE SMILE MONITOR

The monitor will not function until it has been programmed!

There are two monitor programming options:

Option 1: from Panel + Monitor

Option 2: from the Monitor.

Notes:

- The wildcard button  indicates that the monitor has not been programmed.
- **Navigation buttons and capacitive buttons**




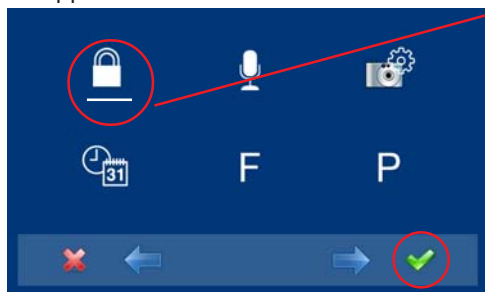
The icons viewed on the screen (navigation buttons: ✕, ←, → and ✓), are managed with the corresponding capacitive buttons located on the monitor

- ✕: Return to the previous screen or stand-by.
- ⏮: Select the previous menu option.
- : Mark the following menu option.
- ✓: Confirm the selection and activate the function.

Option 1: from Panel + Monitor

When the monitor has not been programmed.

1. Access the ADMINISTRATOR menu Press "Menu" for 3 seconds. . The following screen appears

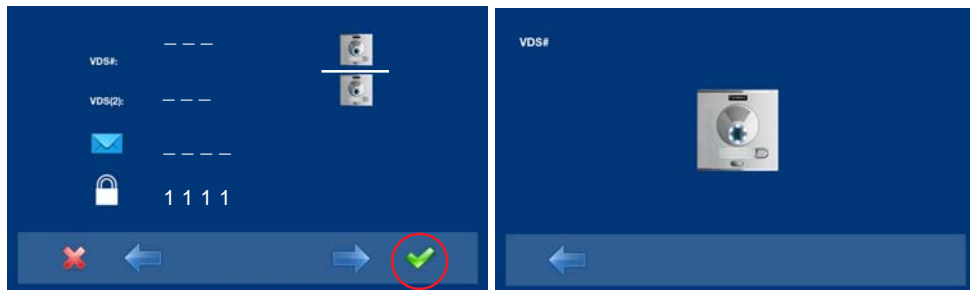


2. The administrator code option is selected as default (white line under the icon). Press ✓. The following screen will appear



3. In order to select programming from the panel, select the panel from the **VDS #** line with the right arrow.

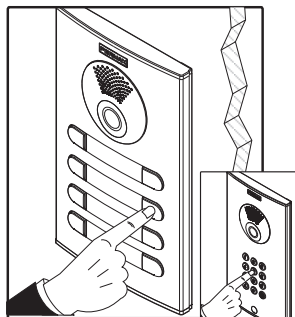
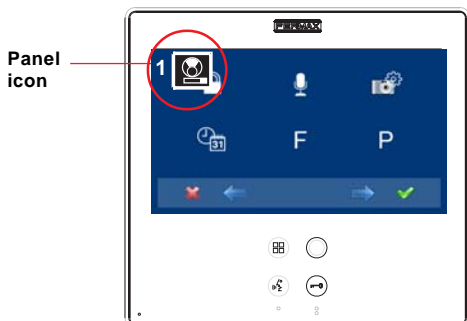
4. The selected option is displayed on the white line under the icon. Press ✓, and a screen appears confirming the selected option: programming from the panel and you hear a beep on the monitor.



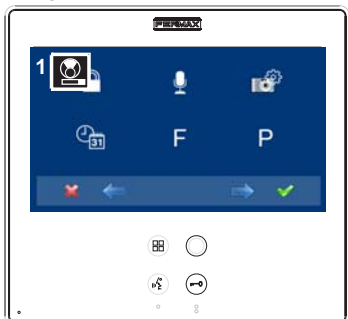
5. The monitor automatically connects to the street panel, activating the camera (this shows a panel icon in the upper left corner of the monitor). Enter the calling code for this monitor from the panel. Depending on the type of panel installed:
- pressing the corresponding button or
 - by entering the code + bell.

Notes:

- The time between steps 4 and 5 must be less than 2 and half minutes.
- Programming is always done from the panel activated as the main panel.




A different calling tone is produced, confirming the monitor's programming, continuing to view the camera's image and after a few seconds the monitor returns to the programming screen.




6. Exit Programming: When you press * you exit to the previous programming menu. Continue pressing * until you exit programming. The monitor will also automatically exit programming mode after 60 seconds of inactivity.

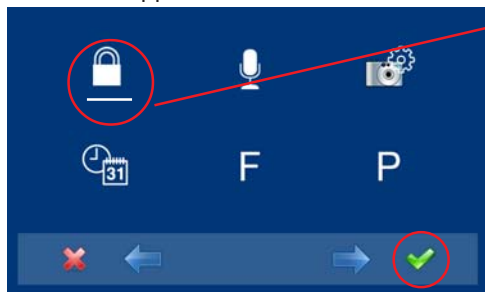
Note:

- The wildcard button  stops blinking (red), indicating that the monitor is programmed.

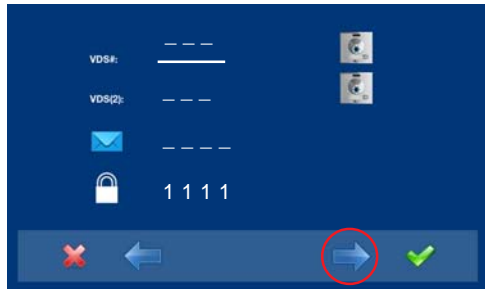
Option 2: from the Monitor Monitors can be programmed on the screen menu.

When the monitor has not been programmed.

1. Access the ADMINISTRATOR menu Press "Menu" for 3 seconds. . The following screen appears




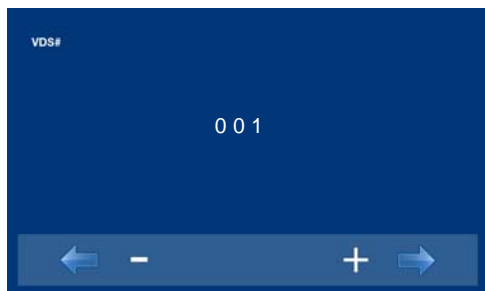
2. The administrator code option is selected as default (white line under the icon). Press ✓. The following screen will appear



3. This option programmed by the VDS # monitor is selected as default. The selected option is displayed on the white line under the icon.

The first thing the monitor then does is indicate the number of the current monitor on the SCREEN. If it is not programmed, it will show the following: - - -

Note: The wildcard button  blinking (red) indicates that the monitor has not been programmed.



4. Program the call number: Press ✓ on the previous screen and access the screen to program the residence's number.

The first number is blinking, each time you press + or - it increases or decreases this number.

When the corresponding number has been programmed you reach the previous menu via the back arrow.

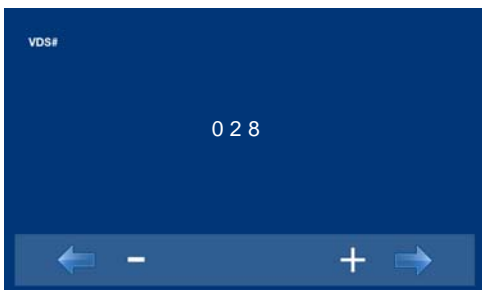


- : Decrease button selected with the cursor.

+ : Increase button selected with the cursor.

➡ : This moves to the following digit.

↺ : It restarts with the first digit.



5. Exit Programming: When you press ✱ you exit to the previous programming menu. Continue pressing ✱ until you exit programming. The monitor will also automatically exit programming mode after 60 seconds of inactivity.

Note:

- The wildcard button ○ stops blinking (red), indicating that the monitor is programmed.

PROGRAMMING: ADMINISTRATOR Menu

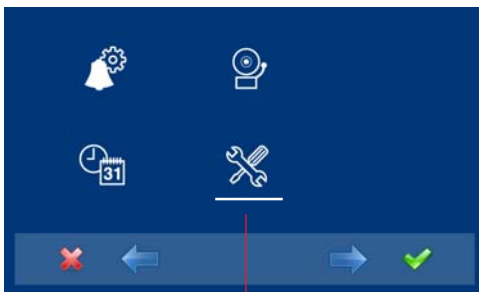
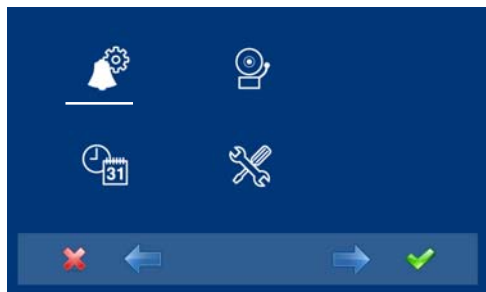
Access the Administrator menu

When the monitor has already been programmed.

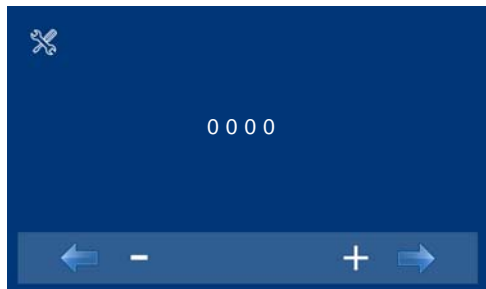
1. To access the ADMINISTRATOR menu. Press "Menu" for 3 seconds. . The following screen is viewed, the do not disturb option appears by default (white line under the icon), select the tool icon via the cursors to access the Administrator menu screen. The selected option is displayed with the white line under the icon. Press ✓, and a screen appears to access the administrator menu, select the option.



to access the screen
CONFIGURATION menu



To access the **ADMINISTRATOR** menu



2. Enter the administrator code, which by default is 1111 (it may be changed).

The first number is blinking, each time you press + or - it increases or decreases this number.

When the administrator code has been entered you access the configuration menu screen appears.

- : Decrease button selected with the cursor.

+ : Increase button selected with the cursor.

→: This moves to the next digit and replaces the previous one with *.

←: It restarts with the first digit.

Notes:

- After entering 3 continuous erroneous codes the monitor will be blocked for 5 minutes.
- **RESET the Administrator code.** If the installer has changed the code and does not remember it, you may restore the default code. Enter the default code 3 times (1111), even if an error appears (showing the digits in red).

3. Once the installer has accessed the **configuration menu screen**, the screen options appear, (use the cursor to move them). The firmware version appears in the right corner of the screen:



Default selection:

a) codes option (white line under the icon). Press ✓. The following screen will appear:





a.1) Programming the monitor from the monitor itself.

Explained in previous pages, see "Programming the smile monitor", option 1.

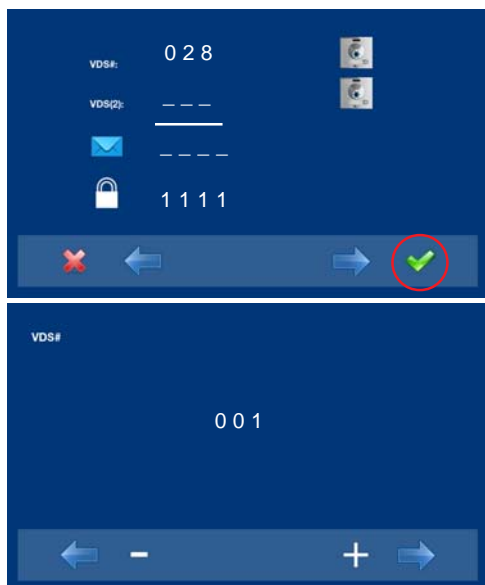
a.2) Programming the monitor from the panel.

Explained in previous pages, see "Programming the smile monitor," option 2.

Call forward.

There is the option to configure the call forward to another residence, in order to be able to attend to the call from another location. **It must be pre-enabled by the installer and selected by the user.** The call is received in both monitors and the first to answer does not allow the other to intercept the communication. The monitor being forwarded to displays an icon on the screen indicating that the call is a forwarded call.

a.3) Programming a call forward. Option 1: from the Monitor.



1. Select the programming option from the monitor **VDS (2)**. The selected option is displayed with the white line under the icon.

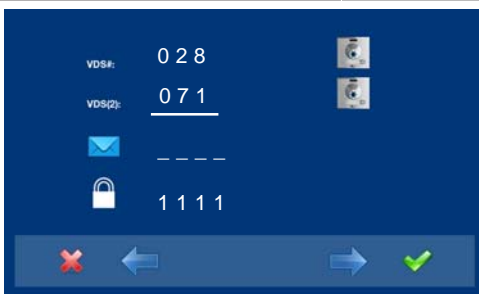
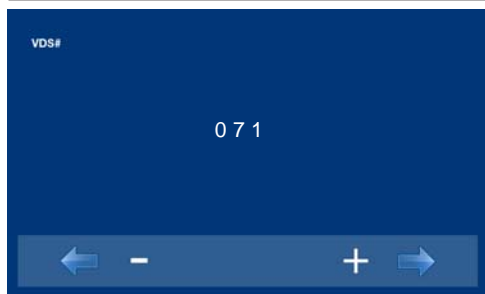
The first thing the monitor then does is indicate the number of the current monitor on the SCREEN. If it is not programmed, it will show the following: - - -

2. Program the call number: Press ✓ on the previous screen and access the screen to program the residence's number.

The first number is blinking, each time you press + or - it increases or decreases this number.

When the corresponding number has been programmed you reach the previous menu via the back arrow.

- : Decrease button selected with the cursor.
- + : Increase button selected with the cursor.
- ➡ : This moves to the following digit.
- ⬅ : It restarts with the first digit.



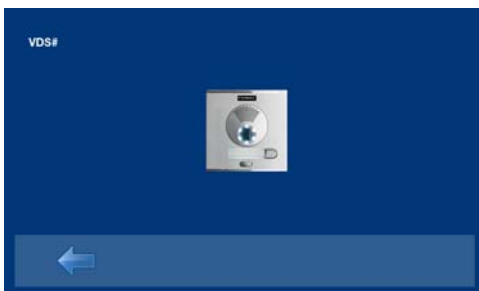
3rd. Exit Programming: When you press ***** you exit to the previous programming menu. Continue pressing ***** until you exit programming. The monitor will also automatically exit programming mode after 60 seconds of inactivity.

a.4) Programming a call forward. Option 2: from Panel + Monitor



1. In order to select programming from the panel, select the panel from the **VDS (2)** line with the right arrow.

2. The selected option is displayed with the white line under the icon. Press **✓**, and a screen appears confirming the selected option: programming from the panel and you hear a beep on the monitor.



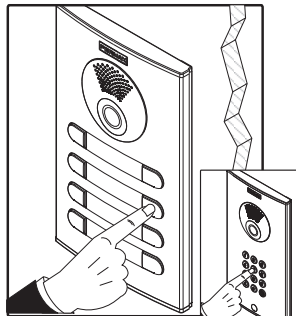
3. The monitor automatically connects to the street panel, activating the camera (this shows a panel icon in the upper left corner of the monitor). Enter the calling code for this monitor from the panel. Depending on the type of panel installed:

- pressing the corresponding button or
- by entering the code + bell.

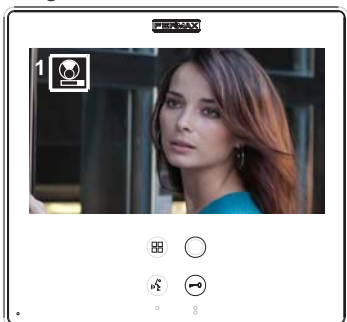
Notes:

- The time between steps 4 and 5 must be less than 2 and half minutes.
- Programming is always done from the panel activated as the main panel.

Panel
icon



A different calling tone is produced, confirming the monitor's programming, continuing to view the camera's image and after a few seconds the monitor returns to the programming screen.



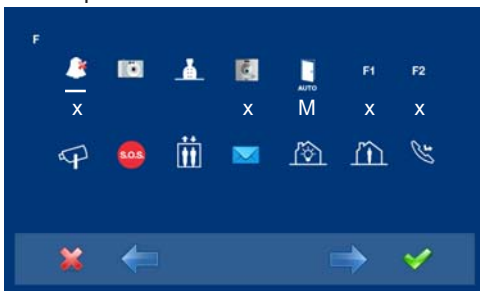
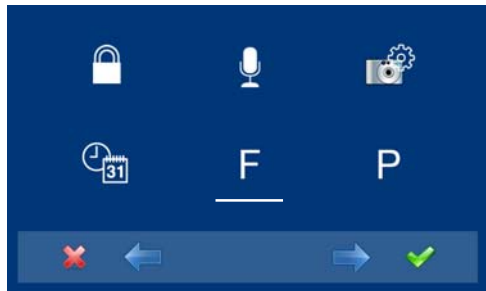
4. Exit Programming: When you press * you exit to the previous programming menu. Continue pressing * until you exit programming. The monitor will also automatically exit programming mode after 60 seconds of inactivity.

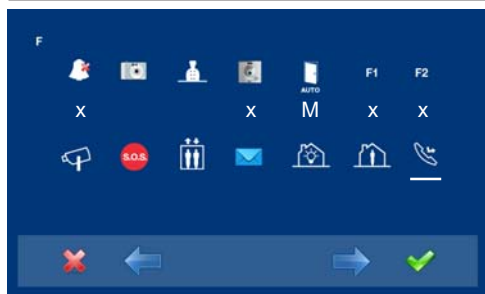
Enable/Select Call forward.

Call forwarding to another residence does not work until the option has been enabled by the installer and selected by the user.

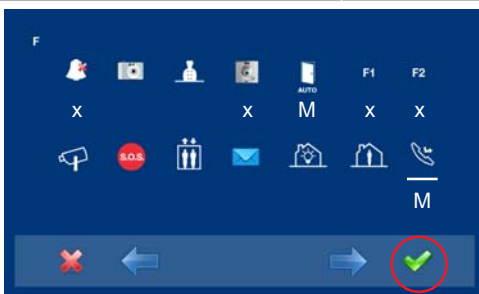
Enable Call forward.

While in the Administrator menu screen, select F and press✓.

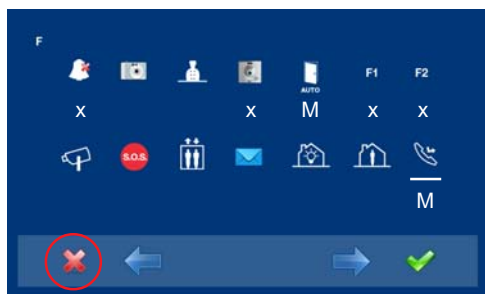




1. In order to enable the call forward option, go to the corresponding icon with the cursors.



2. Pressing ✓, select the desired access mode, in this case the menu M has been selected. The selected option is displayed with the white line blinking under the icon.



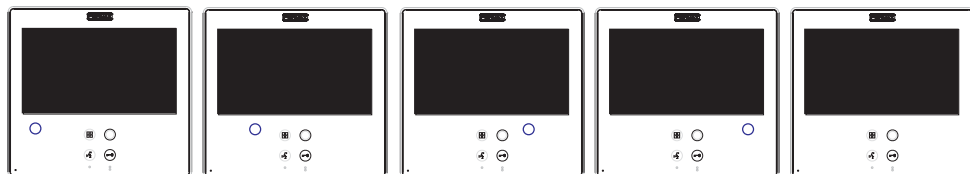
3. Pressing ✓, select the desired access mode, in the selected option. Activation is confirmed since the white line stops blinking and remains constant.




4. Press ✕, to exit to the previous menu. Continue pressing ✕ until you reach the desired menu or you exit programming.

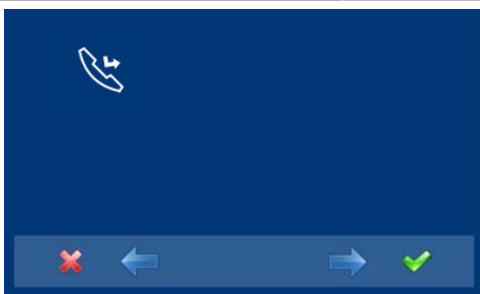
Notes:

- For this function to be saved on the monitor, you must exit the menu. With the monitor in standby, this option is then saved. All capacitive buttons are lit sequentially. When the last one turns off the option is saved.



Select call forward.

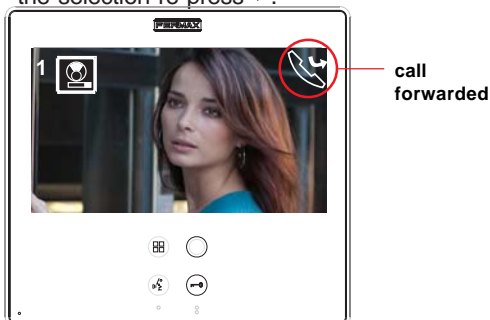
With the monitor in standby, Press "Menu" for 3 seconds. , you access the configuration menu, the screen options appear, (use the cursors to move them). On the second screen you see that the call forward function is enabled by the menu.



1. In order to enable the call forward option, go to the corresponding icon with the cursors, (white line under the icon).

2. By pressing ✓, you select the call forward, and confirm the selection, since it is indicated by the white point on the screen next to the call forward icon. In order to remove the selection re-press ✓.

When a call is made to the monitor (with call forward activated), on the monitor being called, an icon appears on the screen indicating that the call is from a call forward.



a.5) Messages.

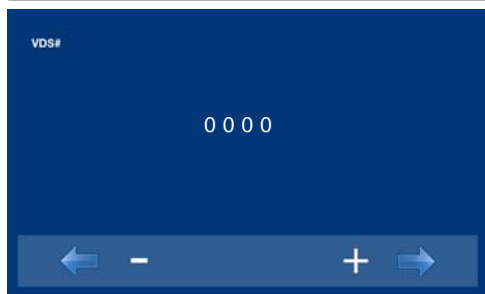
This option is not available in the basic model.

Note: When selecting a not available option, a red X is displayed over it.

a.6) Administrator code change.



1. Select the change administrator code option via the cursors (white line under the icon) and press ✓. The following screen will appear.



2. Enter the administrator code you wish to change.

The first number is blinking, each time you press + or - it increases or decreases this number.

When the administrator code has been entered you access the configuration menu screen appears.

- : Decrease button selected with the cursor.

+ : Increase button selected with the cursor.


➔ : This moves to the next digit and replaces the previous one with *.

⬅ : It restarts with the first digit.



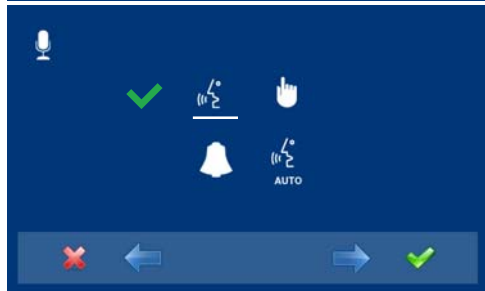
b) Configuring conversation mode

Within the conversation menu we can select between Simplex and Handsfree mode. By default handsfree mode is selected.

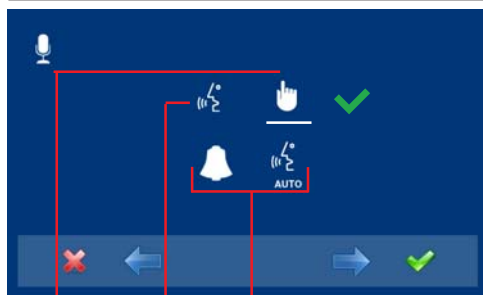
Simplex mode: press to talk and release to listen to the audio activation button .



1. Once the installer accesses the **configuration menu screen**, select the conversation mode option with the cursors (white line under the icon) and press ✓. The following screen will appear.



2. By default handsfree mode is selected.



the feature to automatically open audio after receiving a call
simplex hands free



- With the cursors, select the icon of the desired conversation mode. Press ✓, to select the conversation mode. On the selected mode you will see a ✓.

Note: If there are several monitors in the same apartment, only one of them can have this feature active.

- For example, if you select simplex mode with **automatic audio connection upon receiving the call**. With this option selected with the cursors (white line under the cursor), press ✓, if you want to remove the selection, you also press ✓. Press ✕, to exit to the previous menu and confirm the selected options. Continue pressing ✕ until you reach the desired menu or you exit programming.

c) Images - d) Date/Time.

These options are not available in the basic model.



Note: When selecting a not available option, a red X is displayed over it.

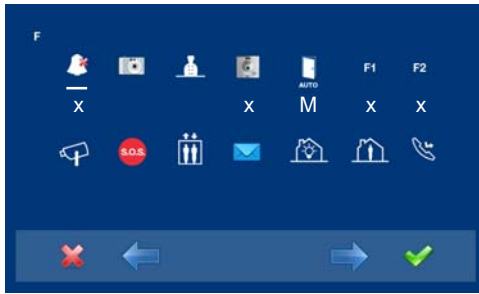


e) Functions

The installer may enable determined functions that are not enabled by default.



- Once the installer accesses the **administrator menu screen**, select the functions option with the cursors (white line under the icon) and press ✓. The following screen will appear.



2. By default the functions are enabled as the screen shows.


The functions that appear with:

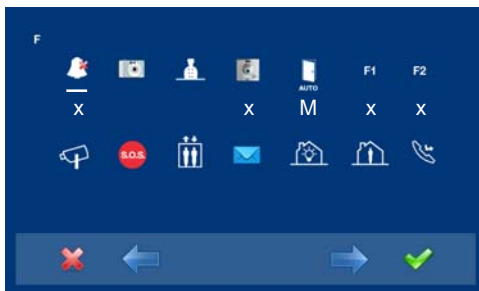
- x: are enabled with a shortcut button and also appear in the menu.
- ○: is enabled as a wildcard and also appears in the menu. .
- M: are enabled for the menu.

Notes:

- The default functions assigned to shortcut buttons are:
 - F1
 - F2
 - Do not disturb mode.
 - Auto-start.



- A short press on the menu button , shows the corresponding icons to these selected shortcut buttons.
- The wildcard button ○ by default is also automatically started.
- Entering in a menu button for the first time, the auto-start button will appear as a shortcut button, however, this function is also available as a wildcard ○, having auto-start in both is an exception made for recently manufactured monitors. You can perform an auto-start (function available on some models).



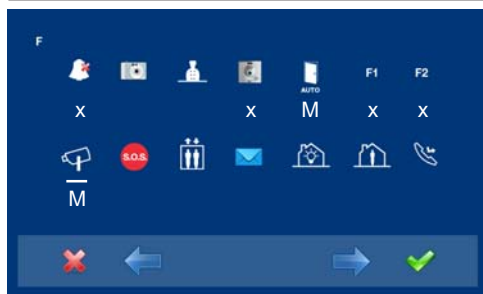
Note:

- All available functions may be enabled in any mode:
- x: Shortcut buttons (max. 4 buttons)
- ○: wildcard button (only 1 function)
- M: enabled for the menu (all functions)

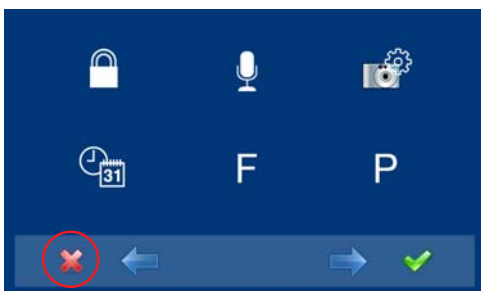
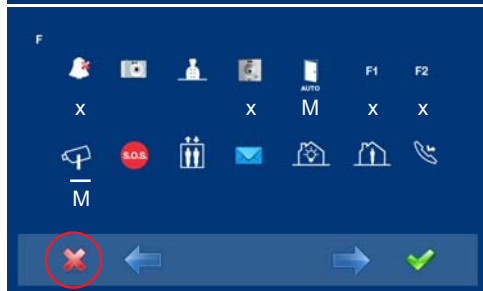
3. The icons from left to right, correspond to functions that are detailed below with their availability in the basic model:

- e1) Do not disturb mode: available
- e2) Images: not available
- e3) Call to guard: available
- e4) Auto-start: available
- e5) Doormatic: according to configuration.
- e6) F1: available
- e7) F2: available
- e8) Auxiliary video input: available
- e9) Panic alarm: available
- e10) Lift Control: available.
- e11) Messages: not available
- e12) Automatisation: not available
- e13) Alarms D1: not available
- e14) Call forward: available.

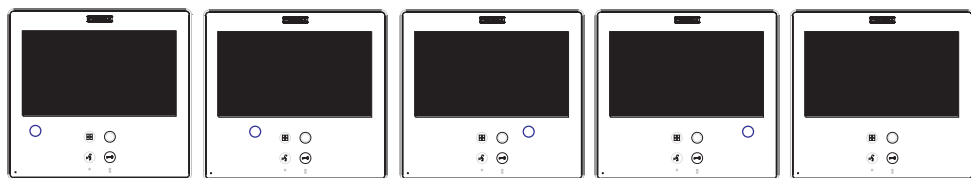
Note: When selecting a not available function, a red X is displayed over it.




4. In order to configure the function's access mode, go to the corresponding icon with the cursors, (white line under the icon). Pressing ✓, you select the desired access mode, in this case the menu **M** has been selected. While selecting the option, the white line is blinking under the icon.



5. Pressing ✓, select the desired access mode, in the selected option. Activation is confirmed since the white line stops blinking and remains constant.
6. Press ✕, to exit to the previous menu. Continue pressing ✕ until you reach the desired menu or you exit programming.
7. For these function/s to be saved on the monitor, you must exit the menu. With the monitor in standby, this option is then saved. All capacitive buttons are lit sequentially. When the last one turns off the option is saved.



8th. With the monitor in standby, Press "Menu" for 3 seconds. , you access the configuration menu, the screen options appear, (use the cursors to move them). You see that it is enabled by the video input function menu (CCTV).

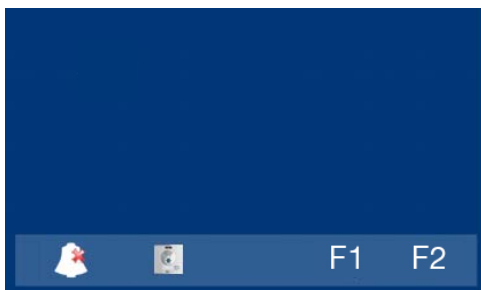


9. These are the default programmed functions in the monitor as shortcuts and that therefore appear as both shortcuts and in the menu.



Via the MENU.

(Pressing "Menu" for 3 seconds.).



For Shortcut buttons.

(Short press "Menu").

Description of the functions

e1) Do not disturb mode (cancel ringtone)

Function for deactivating the ringtone. When we select this function for the first time, the screen shows the non-timed default option (- - : - -) and the user can confirm or change the value to the desired hours and minutes.



1. Select the change administrator code option via the cursors (white line under the icon) and press . The following screen will appear.



2. Enter the hours and minutes you want to activate the do not disturb function.

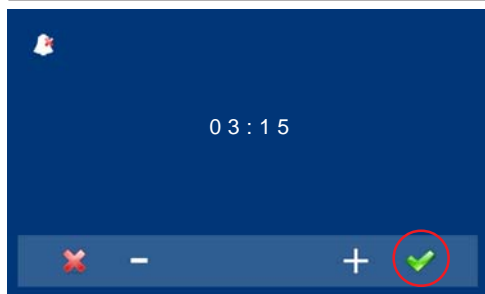
The first cursor is blinking, each time you press + or - it increases or decreases this number. To go to the next digit press . When you have entered the desired time press , or exit the screen with .

- : Decrease button selected with the cursor.

+ : Increase button selected with the cursor.

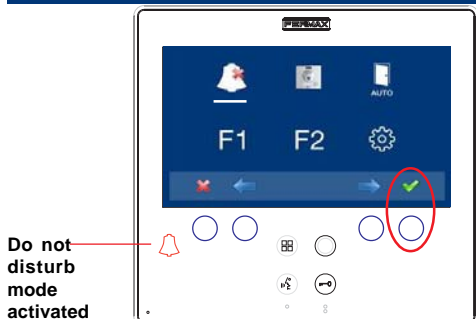
: Confirm the selection and activate the function.

: Return to the previous screen or stand-by.



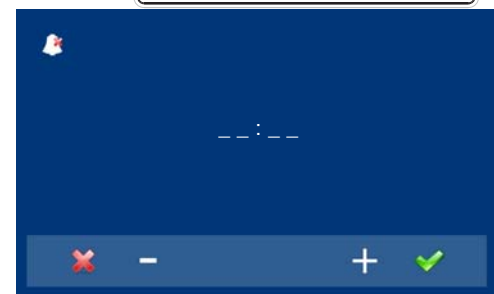
3. For example, we enter 03:15, so the function will be activated for 3 hours and 15 minutes. Going to the previous screen you will view the red led bell, indicating that the function is activated.

Note: Once you configured the time value, it is the default time until changed to a new value via the configuration.



Do not disturb mode activated

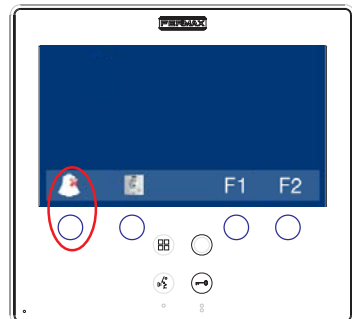
4. Having selected the do not disturb mode by pressing ✓, we disable the selection (the red led bell disappears). In order to re-select them we must start the process from the **1st point**.



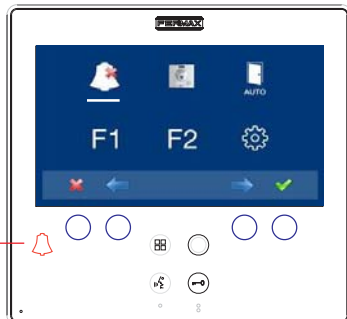
5. If you want to select this mode indefinitely (- - : - -), upon entering in this screen the first number is blinking, press + until you view **the cursor** -, press ✓, the remaining digits automatically turn into cursors (- - : - -), therefore the indefinite mode is on. Continue pressing ✖, until you reach the desired menu or you exit programming.

Note:

- The do not disturb function is default assigned to a shortcut button. A short press on the menu button (⌘), shows the corresponding icons to the selected short button. By pressing the shortcut button you can activate / deactivate the do not disturb mode, (for programs with timers: hours / minutes or indefinite).



Do not disturb mode activated

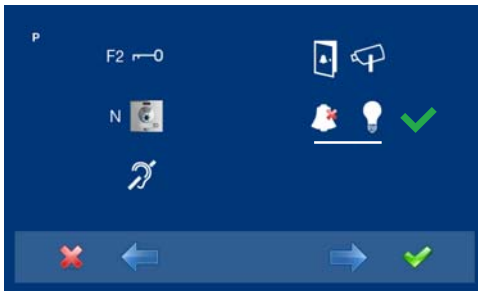


Just as previously stated, we exit the do not disturb mode:

- When the programmed time has passed.
- by pressing the shortcut button or
- by selecting the do not disturb icon on the menu.

Note:

- We can configure the call extension, light and ringtone activator...etc, for this to be enabled in this mode when the monitor receives a call. For this we must activate within the Parameters in **Activate auxiliary devices**, see the corresponding chapter **f) Parameters**.



e2) Images

This function is not available in the basic model.

Note: When selecting a not available function, a red X is displayed over it

e3) Calling a guard unit



In installations with a Guard unit, we can make a call to this via the lock-release button (Ⓜ) (default configuration), when the monitor is in standby. When we make a call and it is confirmed by the Guard unit, an image is activated indicating that the call is in process.

If after 15" there is no response from the Guard Unit, the monitor will show a message indicating that the Guard Unit is busy, that it has registered the call and it will answer it.

Note:

- You can assign a different button for the Guard Unit: shortcut button, wildcard button (Ⓜ) or access via the menu icon. If you have programmed the shortcut or wildcard button, the LOCK RELEASE button, it will never call the Guard Unit.

For example, Call the Guard Unit as a shortcut button (x). This function is enabled as a shortcut button and also appears in the menu.



Via the MENU.

(Pressing "Menu" for 3 seconds.).

For Shortcut buttons.

(Short press "Menu").

e4) Auto-start

With the monitor on standby, press and hold the wildcard for 1 second to switch the monitor on manually. To activate the audio, press the audio activation button

With video, press and hold this button for 2 seconds to sequentially select between the main camera and the secondary camera (where one exists).

Notes:

- If the channel is busy an error tone "BEEP" will be generated and auto-start will not activate, nor will the call to the guard.
- The auto-start function is always used on the main panel except where a call is received on the secondary panel. Once the conversation is over auto-start will activate on the secondary panel for 30 seconds. After this time it will activate on the main panel.
- The wildcard button by default is for auto-start.
- If we enter in a menu button for the first time, the auto-start button will appear as a shortcut button, however, this function is also available as a wildcard , having auto-start in both is an exception made for recently manufactured monitors. You can perform an auto-start (function available on some models):
 - o Wildcard button or
 - o By pressing the shortcut button or
 - o By selecting the icon of the auto-start function on the menu.

e5) Doormatic

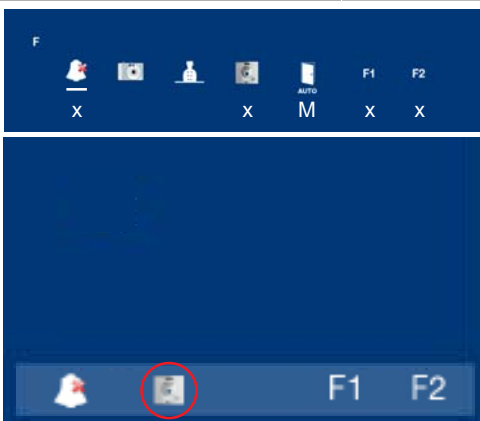
Function as configured.

The auto-start function is enabled as a shortcut button and also appears in the menu.



Via the MENU.

(Pressing "Menu" for 3 seconds.).



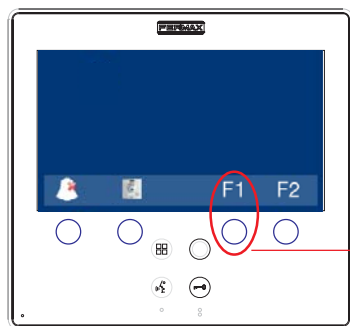
For Shortcut buttons.

(Short press "Menu").

e6) Auxiliary function F1

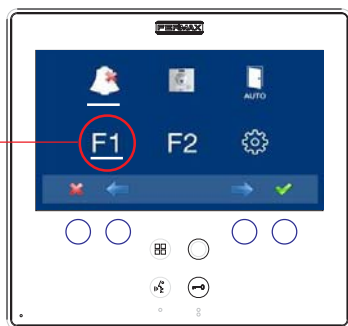
The function F1 and F1 terminal have the option of being configured. You can select between Sending a negative (output) and Panic call to the MDS Guard Unit (input).

It is initially configured, by default, as an output and sends a negative. This output remains active while pressing the button. The screen notifies of the action: F1 OK. The function is enabled as a shortcut button and also appears in the menu.



via the menu

shortcut buttons



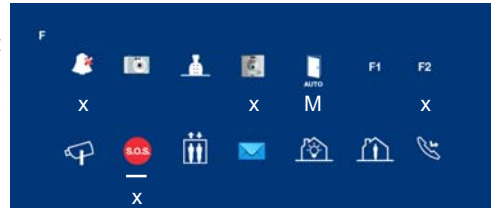
This output remains active while pressing the button.

F1 OK


The F1 terminal acts as an input connecting a button on it for the Panic call to the MDS Guard Unit function (input). In combination with a MDS/VDS decoder version V10.26 or above, you can make a panic call to the MDS guard unit. When you press the button "Panic Alarm" button, the corresponding command is sent through the bus. You must first activate the "Panic Alarm" function as follows:

- Wildcard button ○ (in this mode it lights up red) or
- By pressing the shortcut button or
- By selecting the icon of the auto-start function on the menu.


For example, Panic alarm as a shortcut buttons (x). This function is enabled as a shortcut button and also appears in the menu.



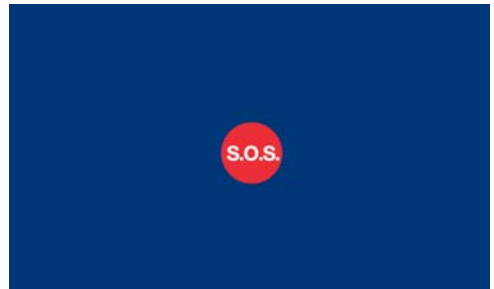
Via the MENU.

(Pressing "Menu" for 3 seconds. .

For Shortcut buttons.

(Short press "Menu" .

When you press the relevant button from the monitor: Panic alarm, the corresponding command is transmitted by the bus, you hear a "beep" on the monitor and it appears on the screen.

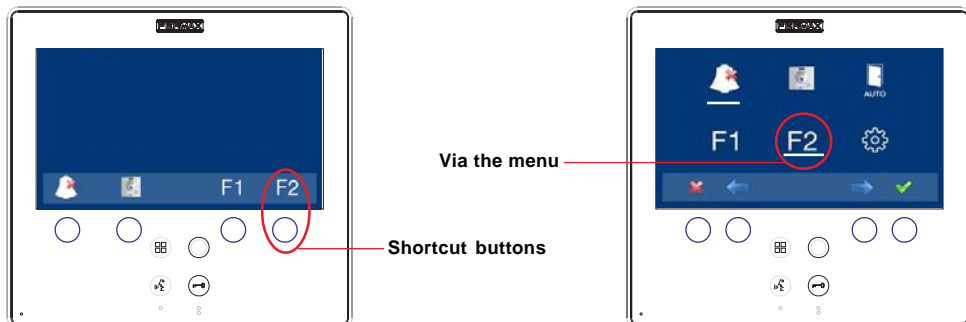


Notes:

- These options are exclusive, either the F1 option or the Panic Alarm option. They can not work simultaneously.
- The panic button is connected between the terminals F1 and -

e7) Auxiliary function F2

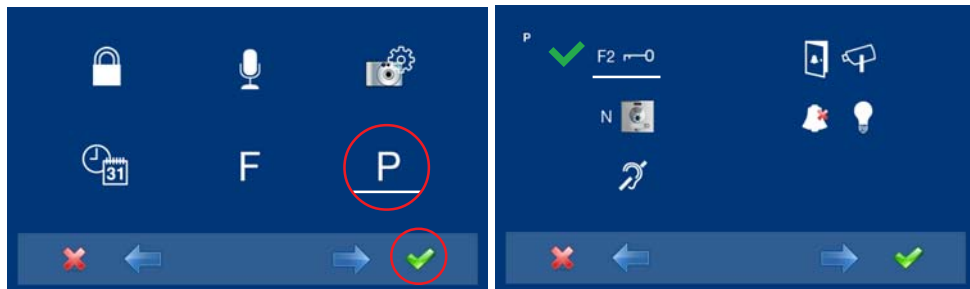
The F2 function mainly acts as an output and sends a negative. This output remains active while pressing the button. The screen notifies of the action: F2 OK. The function is enabled as a shortcut button and also appears in the menu.



This output remains active while pressing the button.

F2 OK

The F2 terminal can also be configured, giving a negative when the lock-release command is sent, during a call or conversation. For this we must activate within the Parameters in **Activation F2 with the lock-release**, see the corresponding chapter **f) Parameters**.



e8) Auxiliary video input (CCTV)

There is the option to connect an external analog camera to the monitor and use it as a CCTV image. This camera's image appears on the monitor when we select the CCTV option on the Menu.

For example, CCTV as a shortcut button (x). This function is enabled as a shortcut button and also appears in the menu.



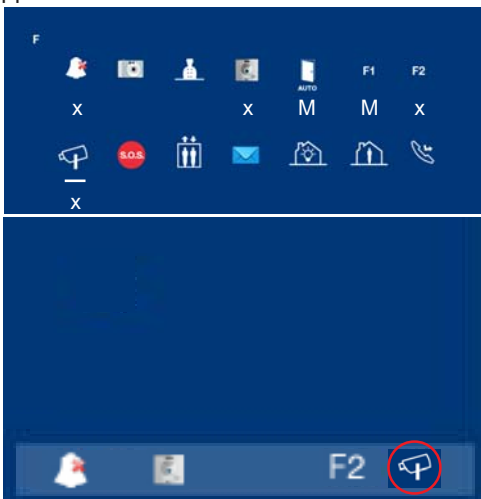
Via the MENU.

(Pressing "Menu" for 3 seconds. ).

When the auxiliary video input is activated, the CCTV icon is displayed on the monitor's screen indicating that it is the CCTV.

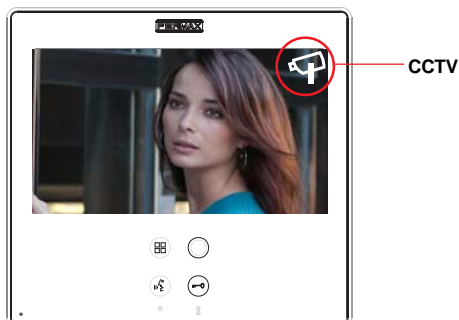
The image remains active indefinitely, we can disable this CCTV function by pressing:

- o "Menu" button  (between 1 and 3 seconds).



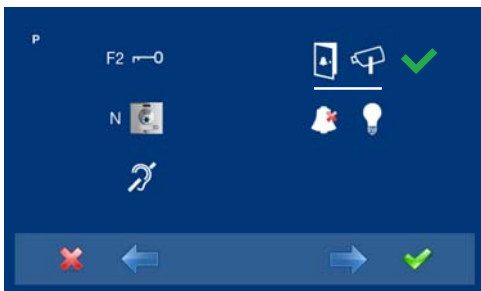
With Shortcut buttons.

(Short press "Menu" ).



CCTV

It can also be configured for when a call is made by the doorbell, the auxiliary video input is automatically activated. This is activated in the **Auxiliary video devices with doorbell**, see the corresponding chapter: **f) Parameters**, section **f4) Auxiliary video with doorbell**



Note:

- If you have a motion detector, this can be connected to the doorbell so that any time the camera detects a person it generates a ring tone and activates the video. The screen will remain active with the video for 30 seconds after the doorbell is activated.

e9) Panic Alarm

Explained in option: **e6) Auxiliary function F1.**

e10) Lift Control

Upon pressing the LIFT icon (shortcut or all-purpose) a command is sent to the MDS-VDS decoder ref. 2409, this command will be interpreted by the decoder (in future versions). Not available on current decoders.

The decoder will send an activation sensor command to the MDS central unit.

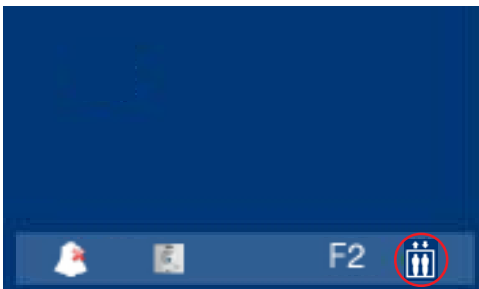
The activation sensor generates an activation message to the Central Unit, which may set off various actions depending on the CU configuration: activation of relays, message to guard, etc... This function is generally used to activate relays, and often for the lift control.

For example, Lift Control as a shortcut buttons (x). This function is enabled as a shortcut button and also appears in the menu.



Via the MENU.

(Pressing "Menu" for 3 seconds.).



For Shortcut buttons.

(Short press "Menu").

When you press the relevant button from the monitor: Lift Control, the corresponding command is transmitted by the bus, and it appears on the monitor.



e11) Messages - e12) Automatisation- e13) Alarms

These options are not available in the basic model.

Note: When selecting a not available option, a red X is displayed over it.



e13) Call forward

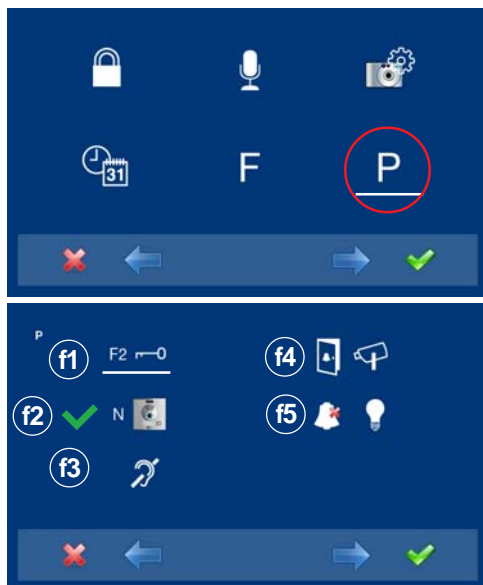
There is the option to connect the call forward to another residence, in order to be able to attend to the call from another location. **It must be pre-enabled by the installer and selected by the user.** The call is received in both monitors and the first to answer does not allow the other to intercept the communication. The monitor being forwarded to displays an icon on the screen indicating that the call is a forwarded call.

Explained in detail in option:

- a.3) Programming a call forward. Option 1: from the Monitor.
- a.4) Programming a call forward. Option 2: from Panel + Monitor
- Enable Call forward.
- Select Call forward.

f) Parameters

The installer may enable determined parameters that are not enabled by default.



1. Once the installer accesses the **administrator menu screen**, select the parameters option with the cursors (white line under the icon) and press ✓. The following screen will appear.

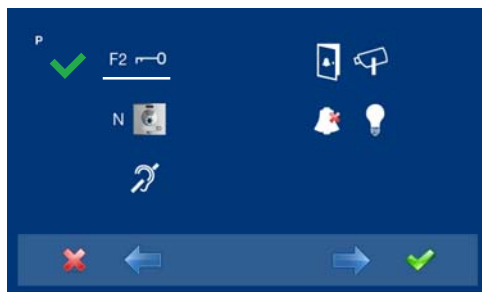
2. By default the following option is activated:
f2) Display call origin.

With the cursors we select the corresponding icon (white line under the icon).

Press ✓, to select the selected mode. On the selected mode you will see a ✓. In order to remove the selection also press ✓.

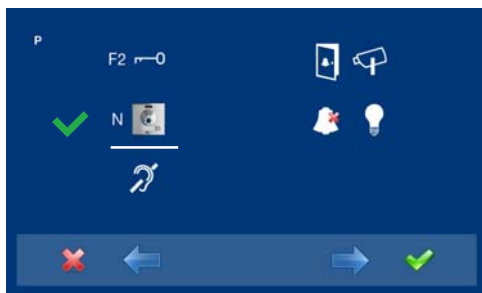
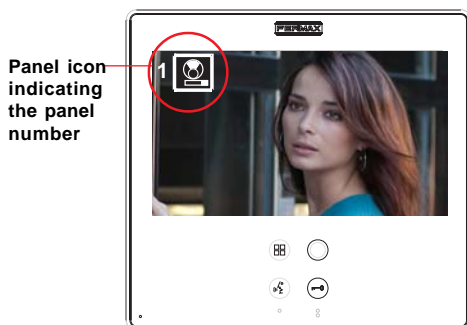
f1) Activation F2 with door opening

The F2 terminal can also be configured, giving a negative when the lock-release command is sent, while the lock-release button is down, during a call or conversation. See Details: **e5) Auxiliary function F2.**



f2) Display call origin.

By default this option is activated, displaying the call origin on the monitor's screen.



f3) Induction ear loop

This function is available on depending model.

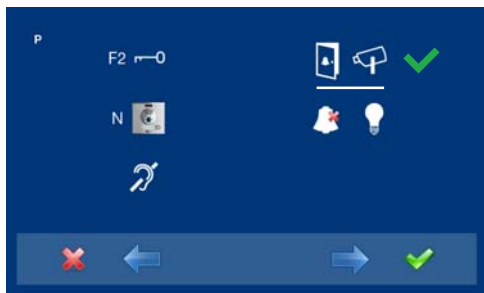


Including induction loop. There are identified with a label.

- Includes an induction loop which interacts with audio devices used by the hearing impaired.
- **Note:** In manual audio devices Digital Mode should be configured.

f4) Auxiliary video with doorbell

It can be configured so that when a call is made by the doorbell, the auxiliary video input is automatically activated. See Details: **e8) Auxiliary video input (CCTV)**



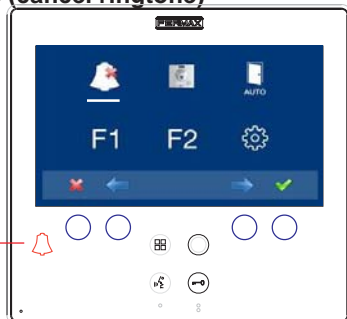
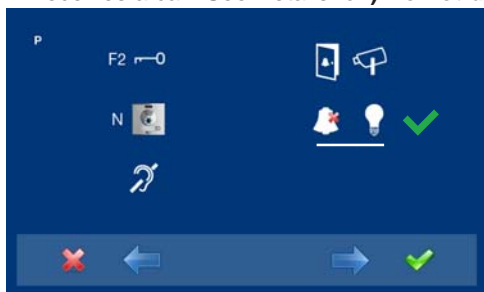
CCTV icon on the screen when the auxiliary video is activated

Note:

- If you have a motion detector, this can be connected to the doorbell so that any time the camera detects a person it generates a ring tone and activates the video. The screen will remain active with the video for 30 seconds after the doorbell is activated.

f5) Activate auxiliary devices

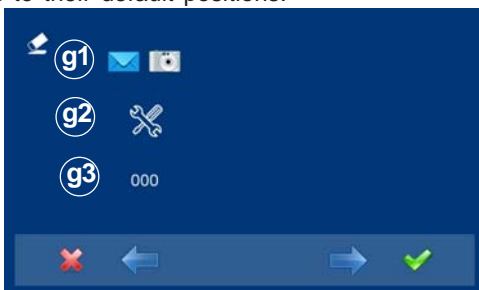
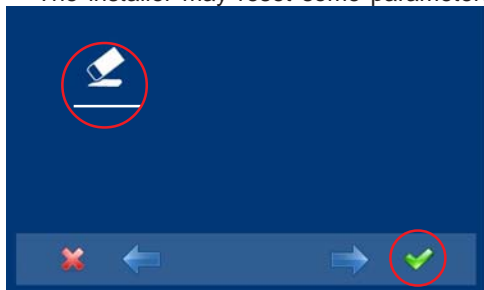
The following may be configured: call extension, light and ringtone activator...etc, for this to be enabled, even if the do not disturb mode is selected when the monitor receives a call. See Details: **e1) Do not disturb mode (cancel ringtone)**



Do not disturb mode activated

g) Resetting parameters

The installer may reset some parameters to their default positions.



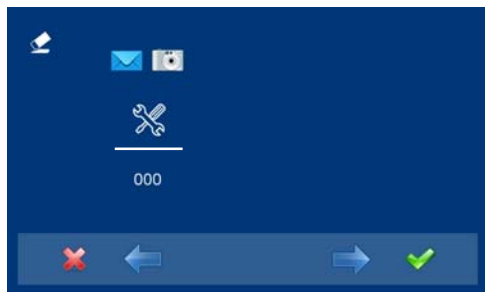
g1) User information

This function is not available in the basic model.

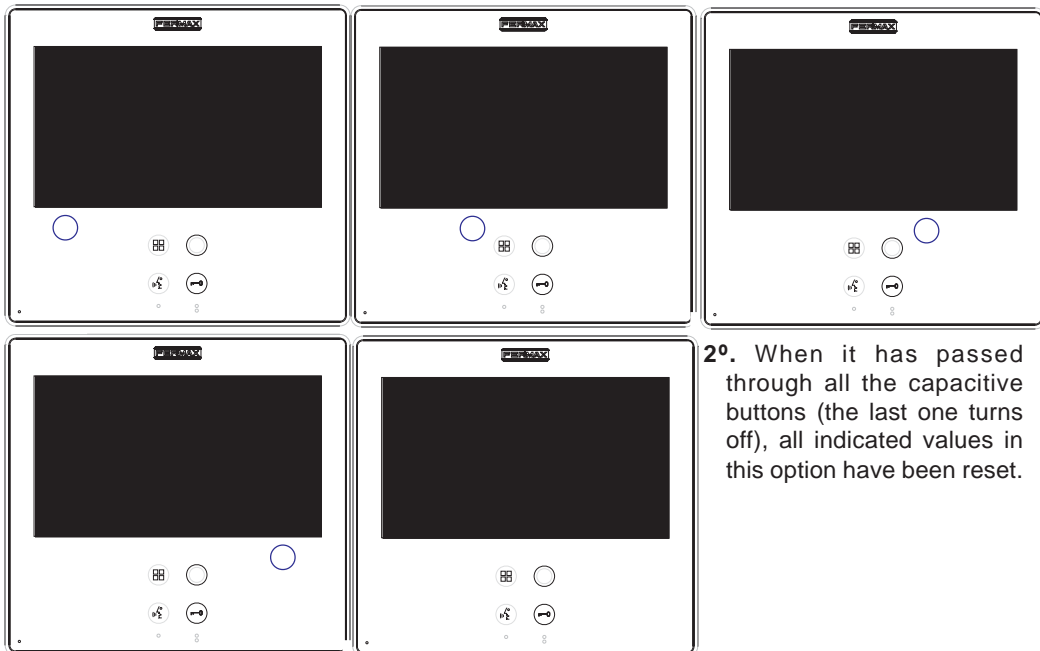
Note: When selecting a not available function, a red X is displayed over it.

g2) Default parameters

This re-establishes the monitor with the default configuration, but does not delete the programmed monitor's address.



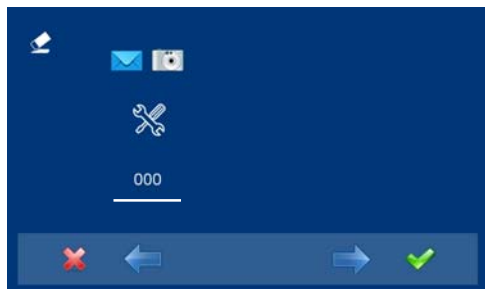
1. Select the default parameters option via the cursors (white line under the icon) and press✓. The monitor exits the menu and starts to save the selected option. This status is displayed, since it sequentially goes through all capacitive buttons, indicating that the reset is being performed.



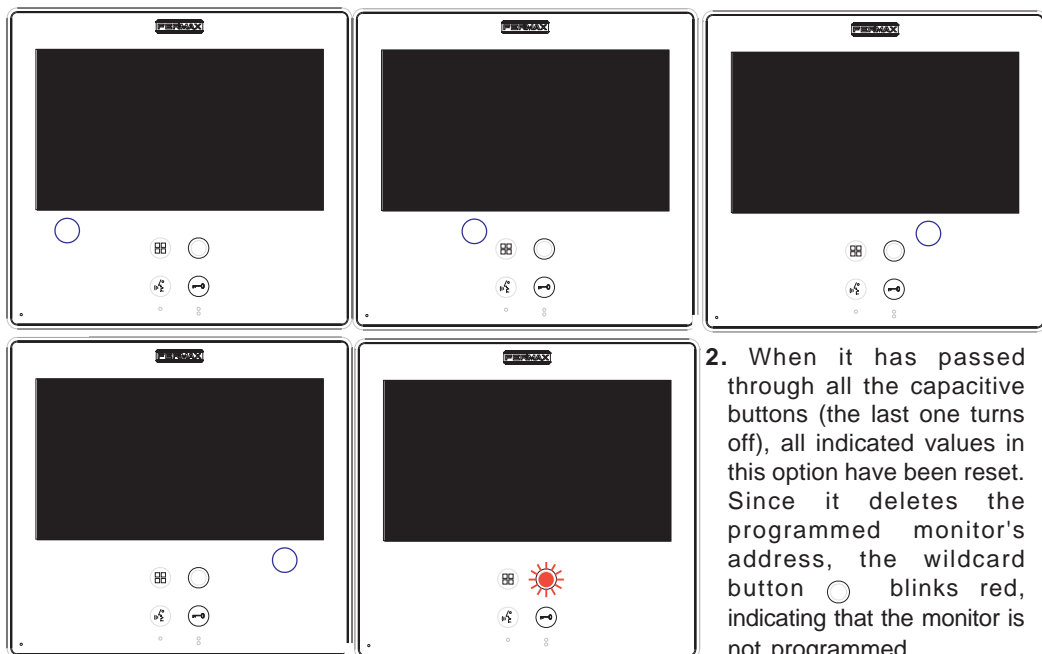
- 2°. When it has passed through all the capacitive buttons (the last one turns off), all indicated values in this option have been reset.

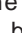
g3) Factory Configuration

This leaves the monitor with the default configuration, (and even deletes the programmed monitor's address)




1. Select the default parameters option via the cursors (white line under the icon) and press✓. The monitor exits the menu and starts to save the selected option. This status is displayed, since it sequentially goes through all capacitive buttons, indicating that the reset is being performed.

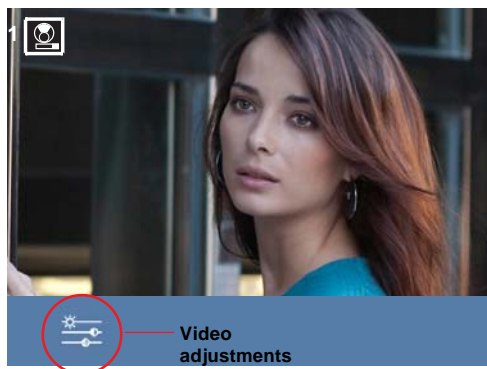


2. When it has passed through all the capacitive buttons (the last one turns off), all indicated values in this option have been reset. Since it deletes the programmed monitor's address, the wildcard button  blinks red, indicating that the monitor is not programmed.

ADJUSTMENTS: Video and Audio

Video adjustments: Brightness - Contrast - Colour

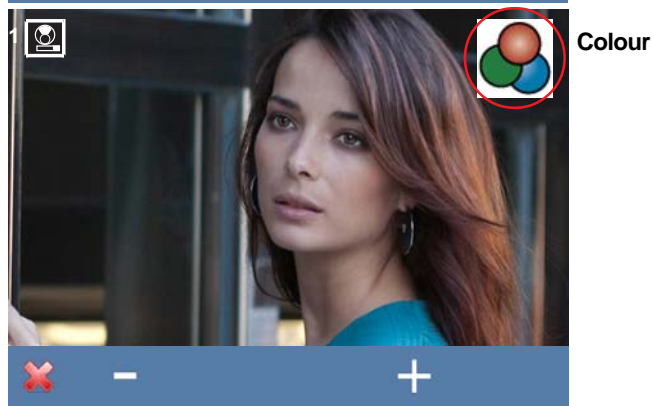
The monitor allows you to adjust brightness, contrast and colour while you have received a call or performed an auto-start. Short-press the "MENU" button  and a menu appears on the screen to adjust the image's brightness.



1. Select the video adjustments option with the corresponding capacitive button. Brightness, contrast and colour settings appear.



2. Select the desired option and increase or decrease the video adjustments according to the selected option.




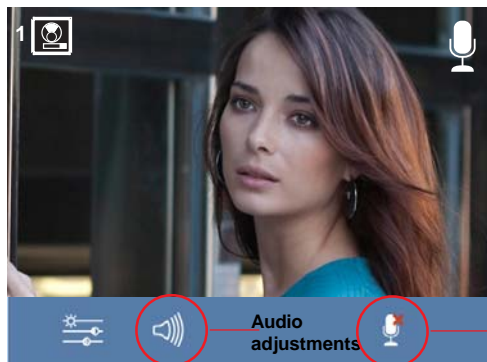
- : Button to decrease.

+ : Button to increase.

✕: Return to the previous screen and confirm the selection.

Audio Adjustments

While the audio channel is open the audio's volume can be regulated via a contextual menu on the screen. Short-press the "MENU" button  and a menu appears on the screen to adjust the audio.



1. Select the audio adjustments option with the corresponding capacitive button.

Mute function: activate/deactivate the corresponding capacitive button. Mute function. When activated, the icon will disappear from the upper right of the screen.



2. While in audio adjustments, use the capacitive buttons to obtain the desired settings.

Note:

- You will exit the audio adjustments option after 60 seconds.

PROGRAMMING: USER Menu

Access the user menu

Note:

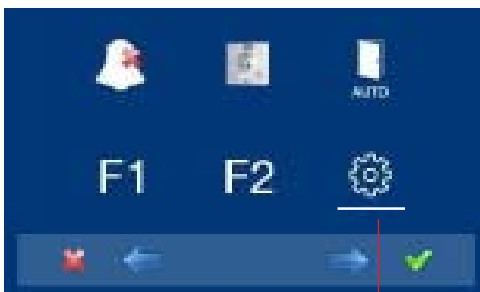
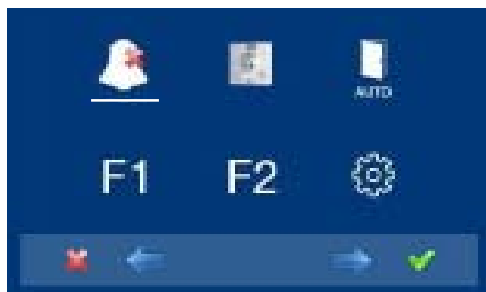
- Navigation buttons and capacitive buttons



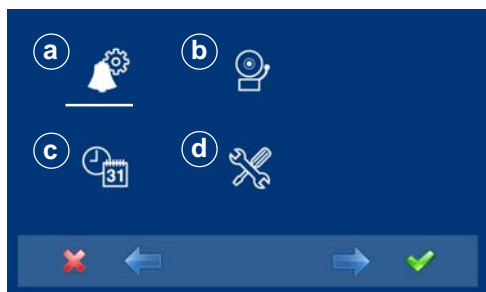
The icons viewed on the screen (navigation buttons: ✕, ←, → and ✓), are managed with the corresponding capacitive buttons located on the monitor

- ✕: Return to the previous screen or stand-by.
- ⌂: Select the previous menu option.
- : Mark the following menu option.
- ✓: Confirm the selection and activate the function.

1. To access the USER menu. Press "Menu" for 3 seconds . The following screen is viewed, The do not disturb option appears by default (white line under the icon), select the tool icon via the cursors to access the User menu screen. The selected option is displayed with the white line under the icon. Press ✓, and a screen appears to access the User menu.



To access the screen
CONFIGURATION menu



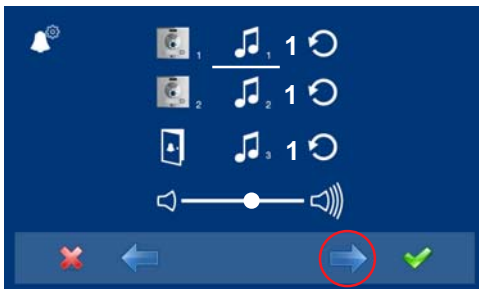
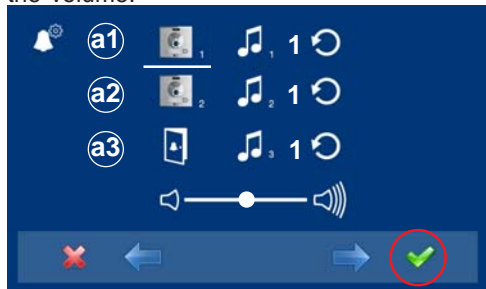
3. Once the installer has accessed the **configuration menu screen**, the screen options appear, (use the cursor to move them).

a) Ringtones

Within the menu, the monitor allows you to select an independent ringtone for the call from:

- a1) Main street panel
- a2) Secondary street panel
- a3) Doorbell

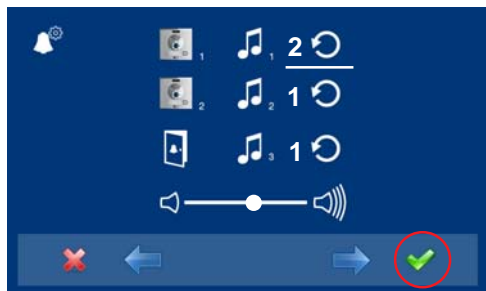
You can select that the ringtone rings three times (continuous mode). We can also adjust the volume.



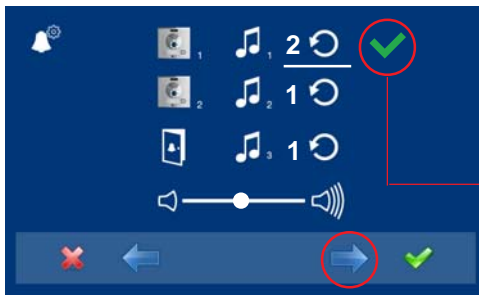
1. Select the origin of the call with the cursors $\leftarrow \rightarrow$, (panel 1, panel 2 or door bell). For example, panel 1 (white line under the icon). Press \checkmark , you access the ringtone.
2. Within the ringtone (white line under the icon), if you press $\leftarrow \rightarrow$, you change and listen to the different ringtones.



3. For example, we press \rightarrow , and hear ringtone 2 and we see that the ringtone number has changed to number 2. This is then the newly selected ringtone.



4. If you want the ringtone to ring three times (continuous mode), press \checkmark , to select continuous mode (white line under the icon).



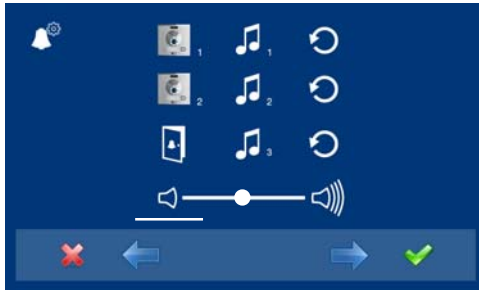
5. Having selected continuous mode, Press →, to select it. In order to remove the selection you also press →.

To go to the next options press ✓.

continuous mode is selected: the ringtone is placed 3 times

Audio Adjustments

To regulate the volume.



1. Select the audio adjustments option via the cursors(white line under the icon) and press ✓. While in audio adjustments, use the capacitive buttons to obtain the desired settings.

You hear a beep when increasing or decreasing call volume.

Note:

- You will exit the audio adjustments option after 60 seconds.

b) Configuring alarms

This function is not available in the basic model.

Note: When selecting a not available function, a red X is displayed over it.



c) Date and Time

This function is not available in the basic model.

Note: When selecting a not available function, a red X is displayed over it.



d) Administrator Menu


Menu for the installer to configure the monitor according to the installation's needs.

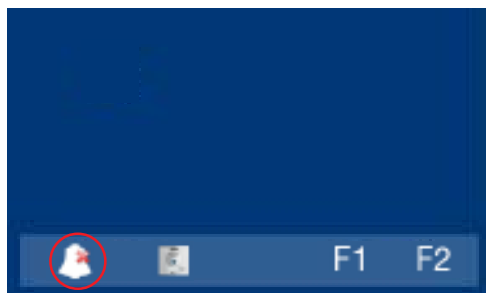
Description of functions

1. Do not disturb mode (cancel the ringtone)

Within the user menu, you can select the Do Not Disturb mode. Function for deactivating the ringtone. When we select this function for the first time, the screen shows the non-timed default option (- - : - -) and the user can confirm or change the value to the desired hours and minutes. For more details see chapter: **e1) Do not disturb mode (cancel ringtone)**.

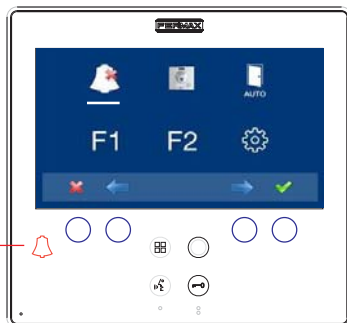
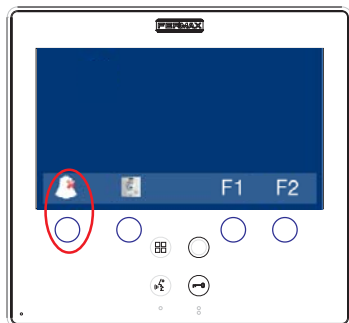
Note: Once you configured the time value, it is the default time until changed to a new value via the configuration.

The do not disturb function is by default assigned to a shortcut button and is also displayed in the menu. A short press on the menu button , shows the corresponding icons to these selected buttons. By pressing the shortcut button we activate / deactivate the do not disturb mode, (for programs with timers: hours / minutes or indefinite).



With Shortcut buttons.

(Short press "Menu" ).



Do not
disturb
mode
activated

The same operation can also be performed via the menu's icon.



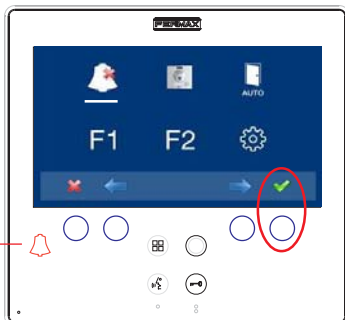
Via the MENU.

(Pressing "Menu" for 3 seconds.).



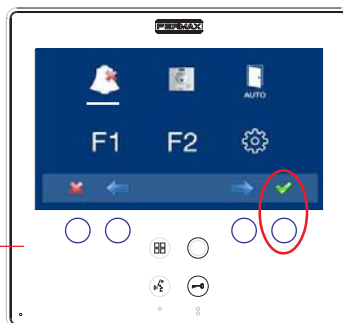
If you want to select this mode indefinitely (- : - -), upon entering in this screen the first number is blinking, press + until you view **the cursor** -, press ✓, the remaining digits automatically turn into cursors (- : - -), therefore the indefinite mode is on. Continue pressing ✕, until you reach the desired menu or you exit programming.

Do not disturb mode activated



Having selected the do not disturb mode by pressing ✓, we disable the selection (the red led bell disappears). In order to select it again, re-press ✓.

Do not disturb mode deactivated



2. Doorbell

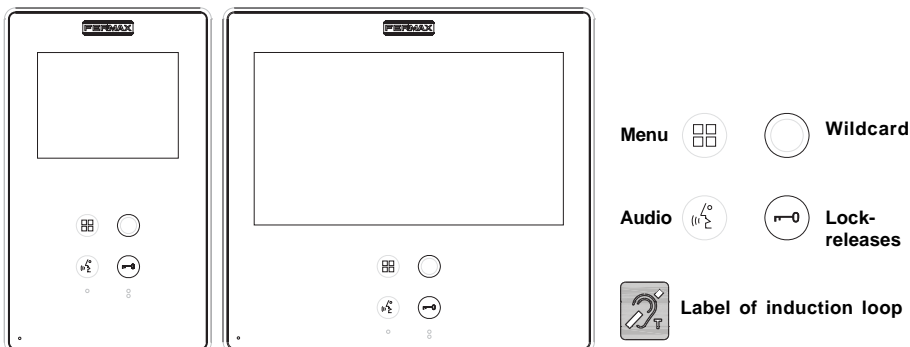
The monitor has two terminals (-,T) to connect an external button so that when a short occurs between them an identification call tone is generated.

As previously discussed, the door's ringtone can be configured within the ringtone menu: a3) The doorbell.

Note:

- Function assigned by the installer. Consult the installer.

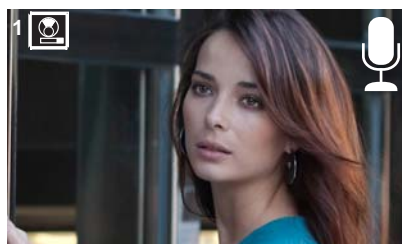
SMILE MONITOR

**Buttons****Audio and Hang-up Activation Button.**

- Upon receiving a call (the user has 30" seconds to answer before returning to standby. During this time the blue led audio button will blink to report a pending call to answer), press this button to talk to the visitor. The audio channel is opened from street to residence, (the blue led on the audio button lights up steadily to indicate that it is in a conversation with the street and anything said will be heard here), this works with handsfree.
- Press to complete the communication, (upon completion the blue led audio light turns off again). The monitor's default internal timer is 90 seconds).

Notes:

- The conversation is private, no other terminal can hear it.
- "Handsfree" mode is the default mode.
- While the audio channel is open the input audio can be regulated. See the corresponding chapter on: "Audio Adjustments."
- If the monitor is configured with the conversation in "simplex mode," press the audio button to talk and release it to listen, (upon receiving the call, the blue led audio button will blink to report a pending call to answer), once we open the channel we will have audio in the monitor direction (the blue led audio will remain lit), when we press the audio button we will change the communication direction. The icon will indicate the channel we have activated at each moment (upper right corner of the monitor). The input channel volume is always adjustable during the conversation.



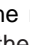

- There is a function configured by the installer to activate the audio channel automatically upon receiving the call. In this mode the conversation will finish as usual by pressing the AUDIO button or after 90".

Note:



- Function assigned by the installer. Consult the installer.

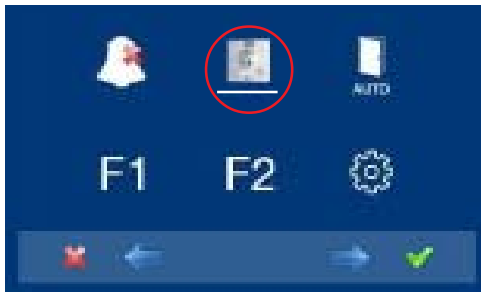


Wildcard button: Auto-Start / Main-Secondary Camera Selection.

- With the monitor on standby, press and hold the wildcard  for 1 second to switch the monitor on manually. To activate the audio, press the audio activation button .
- With video, press and hold this button for 2 seconds to sequentially select between the main camera and the secondary camera (where one exists).

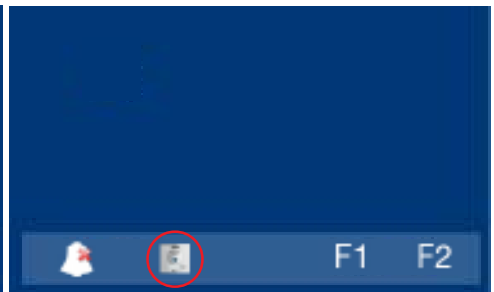
Notes:

- The wildcard button  by default is for autostart, (even though you can program it with another function, ask your installer.)
- If the channel is busy an error tone "BEEP" will be generated and auto-start will not activate, nor will the call to the guard.
- The auto-start function is always used on the main panel except where a call is received on the secondary panel. Once the conversation is over auto-start will activate on the secondary panel for 30 seconds. After this time it will activate on the main panel.
- In this case auto-start can be performed by the:
 - Wildcard button  or
 - By pressing the shortcut button or
 - By selecting the icon of the auto-start function on the menu.



Via the MENU.

(Pressing "Menu" for 3 seconds. .



With Shortcut buttons.

(Short press "Menu" .



Button Menu: Adjustments and configuration.

- In order to access the Administrator menu, from which you can configure the monitor, according to the installation's needs and the user menu, from which you can access the user's customised settings.

Note: When communicating or only with video, pressing the Menu button twice displays the shortcut buttons.



Lock Releases / Call Guard Unit Button.

- Pressing this button whilst communicating with the Entry Panel will activate the *lock release*.

Note: The icon will indicate the channel activated at each moment (upper right corner of the monitor).



- Pressing this button whilst the monitor is on standby will result in a *call being made to the guard unit* (where one exists).

Note: If the channel is busy an error tone "BEEP" will be generated and the call to the guard will not be made.

- The option of activating an output terminal (F2), once the lock-release is activated. This output remains active while pressing the button.

Note:

- Function assigned by the installer. Consult the installer.

F1-F2 Buttons for Additional Functions.

Note:

- Function assigned by the installer. Consult the installer.
- They can be activated:
 - o By pressing the shortcut button or
 - o By selecting the icon of the auto-start function on the menu.

NOTE: The monitor screen goes on once the call from the panel has ended.

Induction loop

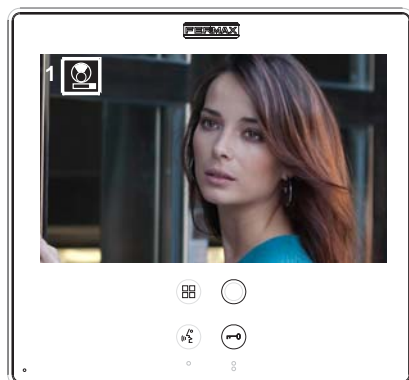
This function is available on depending model.



Including induction loop. There are identified with a label.

- Includes an induction loop which interacts with audio devices used by the hearing impaired.
- Note:** In manual audio devices Digital Mode should be configured.

Operation



Answering a call:

"Handsfree" Mode:

When the call button on the **Entry Panel** is pressed a call tone is produced both on the panel and on the monitor, causing the screen to start up.

Press the button  to speak with the visitor.

The audio channel between the street and the home will be opened; **operating in hands-free mode**. The communication will automatically end after 90 seconds, or at any time by pressing the

button .


The led will remain on (blue) for the duration of the conversation.

If communication is not established with the entry panel, the monitor will automatically go off after 30 seconds.




While in simplex conversation mode (press the button to speak and release to listen).

When the call button on the **Entry Panel** is pressed a call tone is produced both on the panel and on the monitor, causing the screen to start

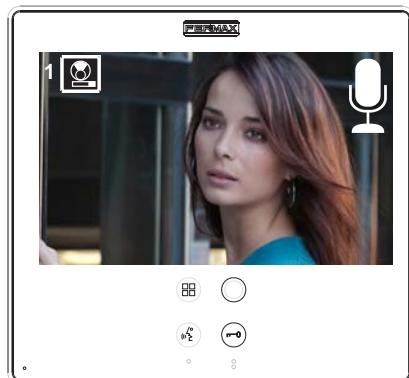
up. Press the button  to speak to the visitor, leaving the upload audio channel activated.

From this point every time you press the 



button, the output audio channel will activate and upon releasing it the input audio channel is re-activated, the **operation is in simplex mode**. The communication will automatically end after 90 seconds, or at any time by short-pressing the

button . The icon will indicate the channel we have activated at each moment (upper right corner of the monitor).

If communication is not established with the entry panel, the monitor will automatically switch off after 30 seconds.





Manual Monitor Activation (Auto-Start)

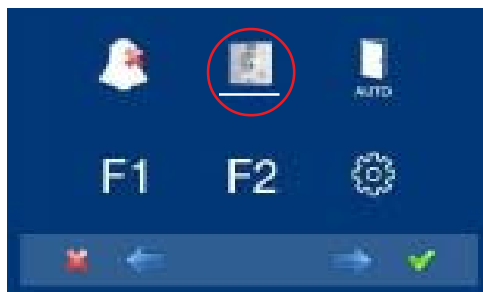
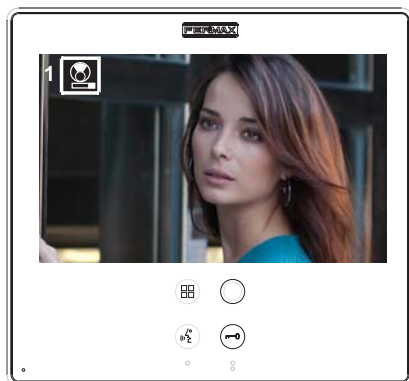
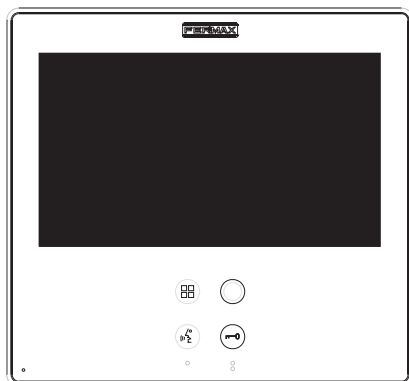
With the monitor on standby, press and hold the wildcard  for 1 second to switch the monitor on manually. To sequentially select between the main camera and the secondary camera (where one exists), press and hold the wildcard button  for 2 seconds.

To activate the audio and speak to the visitor or open the door, follow the steps above.

If communication is not established with the entry panel, the monitor will automatically switch off after 30 seconds.

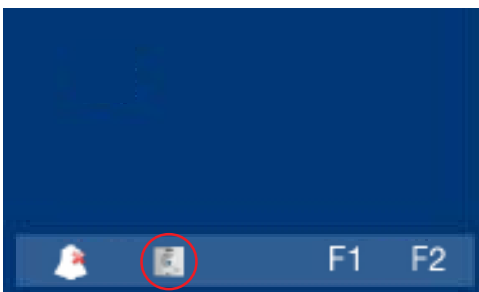
Notes:

- The wildcard button  by default is for autostart, (even though you can program it with another function, ask your installer.)
- Auto-start can be performed:
 - o Wildcard button  or
 - o By pressing the shortcut button or
 - o By selecting the icon of the auto-start function on the menu.



Via the MENU.

(Pressing "Menu" for 3 seconds. .



With Shortcut buttons.

(Short press "Menu" .

Note: When communicating or only with video, pressing the Menu button twice displays the shortcut buttons.

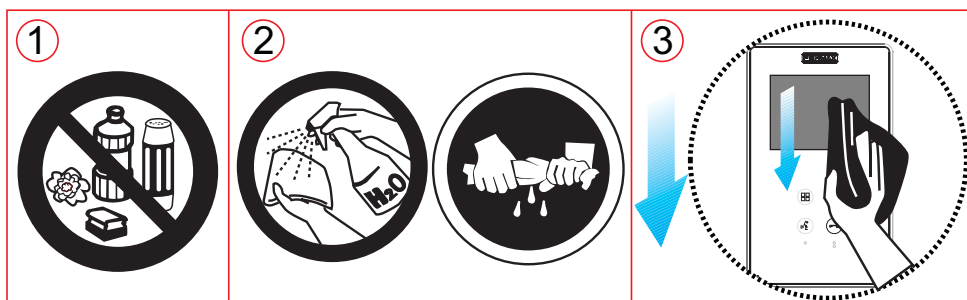
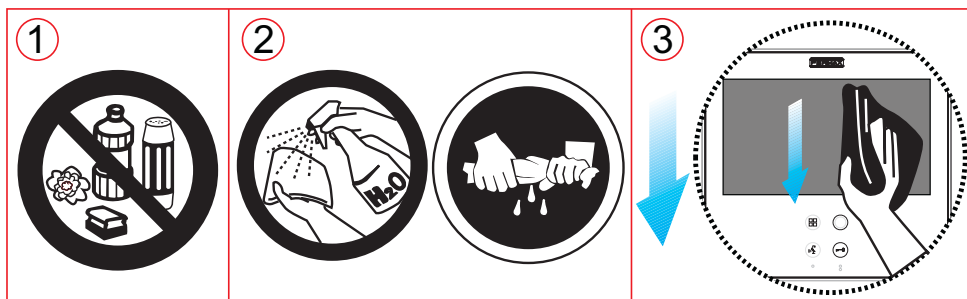


Opening the Door

When a call is received from the entry panel, you can open the door at any time, by pressing the

button .

MONITOR CLEANING

**Steps:**

1. Do not use cleaning products which contain acid, vinegar or are abrasive in nature.
2. Use a **slightly wet** cotton cloth.
3. Wipe it over the monitor always following the same direction. After cleaning the monitor dry it carefully to avoid moisture damage.