



Product Code

F01506

## 1W MEET VIDEO WIT 10" WHITE KIT

Reference

1506

EAN

8424299015064

### Description.

#### Description

WIT MEET VIDEO KIT for single-family homes, offices and businesses. MEET IP video intercom system. Decentralized P2P SIP protocol. Direct connection of devices to the building's network infrastructure.

WIT monitor with 10" capacitive touch screen and hands-free audio. Surface installation using connector 95411. White front. Doorbell function. Photos of missed calls. Viewing IP cameras.

MILO 1L IP54 panel with 1.2MPx color camera. Installation in box 9543. Aluminum finish.

Call forwarding to up to 8 devices with APP MEET ME as standard. Licenses included. Pairing of user mobile devices using a label on the front of the monitor. Receiving calls even when the APP is closed.

Expandable to a maximum of 8 panels and 8 monitors. Possibility of intercommunication between monitors (self-discovery of monitors).

SIP compatible. Integrable with third-party VoIP terminals and switchboards.

Panel RTSP streaming for image recording from a third-party video recorder.

Device reconfiguration via web browser, without additional software.

### Details.

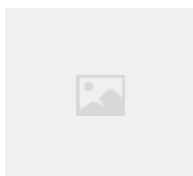
Product measurements (height x width x depth) mm	Weight (kg)	Packaging measurements (height x width x depth) cm	Video Door Entry system Technologie
320x227x245	3.2723	22,4x32,5x24,7	MEET

#### Manuals

- 970203Eb\_Manual\_instalador\_Monitor\_MIO\_WIT\_V11\_20.pdf

- 970295\_Guia\_Rap\_Inst\_Monitor\_WIT\_V07\_23.pdf

## Products included



F09543  
MILO 1/W PANEL FLUSH BOX MEET



F95411  
NEO/WIT MONITOR  
CONNECTOR MEET



F01586  
SWITCH POE 4 PORTS



F14831  
WIT 10' HOME AUT. MONITOR POE  
WHITE MEET



F09533  
1/W MILO VIDEO PANEL MEET

## Accessories



F01490  
EXTERNAL DOORLOCK RELAY MEET



F01485  
MEET MONITOR DESKTOP SUPPORT



F95181  
MILO 1W PANEL SURFACE BOX MEET  
ALU



F04813  
P.S.U. DIN6 100-240VAC/12VDC-2A



F06750  
UNIVERSAL ELECTRIC STRIKE 990N  
10-24V MAX



F67501  
UNIVERSAL LOCK RELEASE 990N-P22  
10-24V MAX

## Video

- <https://youtube.com/playlist?list=PLf1YNFmssC35LYHVgr>

Raf2CeCV\_YhK9a-&feature=shared