

Product Code

F01677

# MARINE SIP PANEL ST2 CVP201 DDA



Reference

1677

EAN

8424299016771

## Description.

### Description

**Marine SIP panel with 2 buttons.** MARINE is the Fermax IP65 IK09 vandal-resistant plate. It is made of 2.5mm thick stainless steel. AISI 316L steel type.

Marine is the perfect choice to install in places with extreme weather conditions or in dangerous environments, humid or corrosive climates.

Steel color. Also available in color or with laser screen printing. See reference 31722 Marine SIP Elite plate.

The **call buttons** are vandal-proof, made of stainless steel and with an anti-lock system, they resist any impact.

They include a card holder to house an information label. Marine plates do not include the recessed box or surface, they must be ordered separately. The surface plates include a protective visor.

- Configuration via webserver
- Programmable button for sequential P2P calls to up to 8 different terminals

- Possibility of connection to up to two VoIP servers, local or remote
- Compatible with MEET devices and MEET ME APP\*

\*For SIP integrations with MEET devices and/or MEET ME call forwarding, consult the possibilities in the installer manual. MEET ME license ref. 1496 call forwarding to mobile is purchased separately.

### One to one module

The OneToOne module shows, using 4 LED icons, the status of the board.

These icons symbolize:

- Call
- Conversation
- Door Opening
- Busy channel.

NOTE: The "Channel Busy" icon is only displayed by the VDS System.

<b>Protocols</b>	SIP v1 (RFC2543), SIP v2 (RFC3261) over TCP, UDP or TLS RTP/RTCP/SRTP STUN DHCP SNTP FTP/TFTP HTTP/HTTPS TR-069
<b>Video</b>	2Mpx HD Camera Resolution 720p/1080p H.264
<b>Audio</b>	Codecs G.711A/U, G.729A/B, iLBC, G.723.1, G.726-32K, G.722, Opus DTMF In-band, Out-band (RFC2833/SIP INFO)
<b>Outputs</b>	2x NC/NO relay, N/C maximum 30V/2A DC, 125V/0.5A AC
<b>Network</b>	Ethernet 10/100Mbps IPv4, IPv6, IPv4+IPv6 modes Static, Dynamic, PPoE IP Address L2TP VPN, OpenVPN VLAN
<b>Supply</b>	PoE Class 3 (30W max) 12-24Vdc/1A

<p><b>Others</b></p>	<p>Operating temperature: -30°C to 60°C Operating humidity: up to 95%, non-condensing Tested according to IEC 60068-2 standard</p>
----------------------	--

## Details.

<p>Weight (kg) 1.3179</p>	<p>Packaging measurements (height x width x depth) cm 8,2x25,2x16,4</p>	<p>Video Door Entry system Technologie SIP</p>
-------------------------------	---	--

### Manuals

- 970300Ab SIP marine panel installer manual v09\_24.pdf
- 970300Eb Manual instalador Placa SIP Marine v09\_24.pdf
- 970300Fb SIP marine panel installer manual v09\_24.pdf
- 970300Ib SIP marine panel installer manual v09\_24.pdf
- 970300Ob SIP marine panel installer manual v09\_24.pdf
- 970300Pb SIP marine panel installer manual v09\_24.pdf
- 970300Yb SIP marine panel installer manual v09\_24.pdf
- 970318 Guia rapida Placa SIP Marine DDA V06\_24.pdf
- 97737\_Limpieza\_Placas\_Marine\_V04\_20.pdf

### Declaration of conformity

- DOCF01677EN.pdf

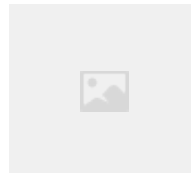
### Accessories



F04642  
MARINE ST2 FLUSH BOX



F04646  
MARINE ST2 SURFACE BOX



F01496  
MEETME CALL DIVERT LICENSE W/O  
TERM 1APT



F04813  
P.S.U. DIN6 100-240VAC/12VDC-2A



F01586  
SWITCH POE 4 PORTS



F01587  
SWITCH POE 8 PORTS