



Product Code

F01680

## MARINE SIP PANEL ST1 AP101

Reference

1680

EAN

8424299016801

### Description.

---

#### Description

**Marine SIP panel with 1 push button.** MARINE is the Fermax IP65 IK09 vandal-proof panel. It is made of 2.5mm thick stainless steel. Steel type AISI 316L.

Marine is the perfect choice for installation in those places with extreme weather conditions or in hazardous environments, humid or corrosive climates.

Steel color. Also available in color or with laser screen printing. See reference 31722 Marine SIP Elite plate.

The **call buttons** are vandal-proof, made of stainless steel and with an anti-blocking system, they resist any impact.

They include a card holder to hold an information label. Marine panels do not include the flush-mounted or surface box, they must be ordered separately. Surface panels include a protective visor.

- Configuration via webserver
- Programmable push button for sequential P2P calls to up to 8 different terminals
- Possibility of connection to up to two VoIP switchboards, local or remote

- Compatible with MEET devices and MEET ME APP\*

\*For SIP integrations with MEET devices and/or MEET ME call forwarding, please refer to the installer manual for possibilities. MEET ME license ref. 1496 for call forwarding to mobile is purchased separately.

<b>Protocols</b>	SIP v1 (RFC2543), SIP v2 (RFC3261) over TCP, UDP or TLS RTP/RTCP/SRTP STUN DHCP SNTP FTP/TFTP HTTP/HTTPS TR-069
<b>Audio</b>	Codecs G.711A/U, G.729A/B, iLBC, G.723.1, G.726-32K, G.722, Opus DTMF In-band, Out-band (RFC2833/SIP INFO)
<b>Outputs</b>	2x CN/O relay, N/C maximum 30V/2A DC, 125V/0.5A AC
<b>Network</b>	Ethernet 10/100 Mbps IPv4, IPv6, IPv4+IPv6 modes Static, Dynamic, PPoE IP Address VPN L2TP, OpenVPN VLAN
<b>Supply</b>	PoE Class 3 (30W max.) 12-24Vdc/1A
<b>Others</b>	Operating temperature: -30°C to 60°C Operating humidity: up to 95%, non-condensing Tested according to IEC 60068 standard

## Details.

Weight (kg)	Packaging measurements	Video Door Entry system
1	(height x width x depth) cm	Technologie
	21x15,8x7,8	SIP

## Manuals

- 970299b Guia rapida Placa SIP Marine V07\_24.pdf
- 970300Ab SIP marine panel installer manual v09\_24.pdf
- 970300Eb Manual instalador Placa SIP Marine v09\_24.pdf
- 970300Fb SIP marine panel installer manual v09\_24.pdf
- 970300Ib SIP marine panel installer manual v09\_24.pdf
- 970300Ob SIP marine panel installer manual v09\_24.pdf
- 970300Pb SIP marine panel installer manual v09\_24.pdf
- 970300Yb SIP marine panel installer manual v09\_24.pdf
- 97737\_Limpieza\_Placas\_Marine\_V04\_20.pdf

## Declaration of conformity

- DOCF01680EN.pdf

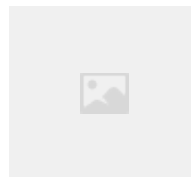
## Accessories



F04641  
MARINE ST1 FLUSH BOX



F04645  
MARINE ST1 SURFACE BOX



F01496  
MEETME CALL DIVERT LICENSE W/O  
TERM 1APT



F04813  
P.S.U. DIN6 100-240VAC/12VDC-2A



F01586  
SWITCH POE 4 PORTS



F01587  
SWITCH POE 8 PORTS