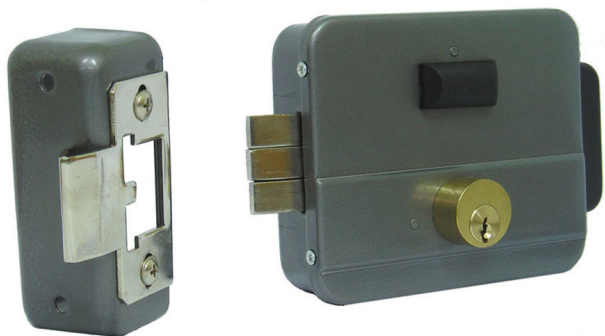


Product Code

F02879

ELECTRIC RIM LOCK MOD.962- DOUBLE KEY+PUSHBUTTON



Reference

2879

EAN

8424299028798

Description.

Description

Operating type.

There are several types of door lock release mechanisms depending on the type of operation needed.

N type Normal 12 Vac. (Normal operation and 12 Vac activation).

The lock release is unblocked for the time that the 12 Vac voltage is applied.

Reversible (Right DIN or Left DIN).

Lets you open the door from right and left.

Symmetrical.

Allows to change hands, maintaining the body symmetry.

DIN STANDARD

establishes the direction the door opens and designates the type of lock release installed.

Looking at the door from the side with the hinges visible:

- If the hinges are to the left of the observer, it is a left DIN lock release.
- If the hinges are on the observer's right, it is a right DIN.

Serie 960

Replacement Electric Rim Lock . Its size and standard attachment point allow insertion into the majority of electric locks. The

cylinder is adjustable from 50 to 70 mm.

Technical Details

Consumption:
12Vac: 850mA
12Vdc: 1,7A.

Details.

Product measurements (height x width x depth) mm	Weight (kg)	Packaging measurements (height x width x depth) cm	Video Door Entry system
105(V)x124,5(H)x37,5(P)	1.417	11x17x13,5	Technologie GENERICA

Accessories



F02013

ADDITIONAL FUNCTIONS RELAY



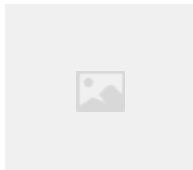
F05287

EMBED EXIT BUTTON (SBUTTON 1)



F04800

P.S.U DIN4 230Vac/12Vac - 1,5A



F03491

RELAY CARRIL DIN 12 VDC 12A



F05288

SURFACE EXIT BUTTON (SBUTTON 5)

Dimension image

