



Product Code

F05293

KEYPAD W/PROXIMITY RESISTANT

Reference

5293

EAN

8424299052939

Description.

Description

Vandal-resistant keyboard with integrated proximity, narrow profile and small dimensions. Allows you to work in autonomous or centralized mode.

STAND-ALONE MODE WITH INTEGRATED CONTROLLER (default)

Maximum capacity of up to 600 users.

Dispose of:

- 2A relay output configurable from 1-99sg (5s by default) or bistable (when the card is presented the relay is activated and when it is presented again, it is deactivated).
- Door open sensor input.
- Exit push button entry.
- Alarm output - (negative output that allows activating a ref.2013 relay).

This keyboard allows up to 4 different types of access:

- card only
- Card+PIN.
- Card or PIN (default)
- Multicard, PIN.

Presenting 2 to 9 valid cards or pins will open the door. Entering the access code is done by entering the 4 to 6 digit code + #. Multicard/PIN type access allows the user to always be accompanied. For example, if it is programmed with 3 identifiers, in order to operate the door, the user will have their valid card and until the two additional cards are passed (example of the guards), the door will not open. An identifier number called ID (1-600) is associated with each user. Users with ID (1-598) are standard users who, upon presentation of a valid card or code, will open the door. Users with ID (599 or 600) are panic users; these users, upon presenting their valid card or code, open the door and simultaneously activate the auxiliary Alarm output for 1 minute or until a valid card or pin is presented.

The keypad has a door sensor input (can be activated or deactivated). If it is activated and the door is opened without prior authorization, an alarm will go off until a valid identifier is presented and the door is closed. It will also activate an alarm if the door is left open for more than 1 minute after valid access.

The keyboard is supplied with two master cards that allow you to register or delete cards or key fobs, not codes. The codes are registered through the keyboard itself.

AUTONOMOUS MODE WITH EXTERNAL CONTROLLER

If a user capacity between 600-1000 is needed, it is possible to configure the keyboard as wiegand26 and connect it to a MINI autonomous controller ref. 5276.

CENTRALIZED MODE

To access the user database on a PC or allow access to more than 600 people, this keyboard can be configured in Wiegand 26/8bits burst so that it can be installed in a centralized system such as AC-MAX, AC+ or IP -AXES, which will allow you to have a record of entries and exits knowing time, user and access. To carry out this type of installation it is necessary to add an external controller to the reader which will be managed by PC and will be able to have the user database and view the event log in real time or offline.

Technical Details

MECHANICAL CHARACTERISTICS

- APPEARANCE
- Aluminum 3mm
- Surface fixing system.
- Hidden screws.
- IP66

DIMENSIONS

- Surface mounting (55(H) x 147(V) x 20(D) mm.

TECHNICAL CHARACTERISTICS

- Feeding:
- 12-28 Vac/dc
- Centralized: 12Vdc.
- Rest consumption:
- 12Vdc / 65mA
- Operating temperature: [-20°C, +60°C]
- Humidity: [10%, 90%]
- Compatibility: EM(125KHz), MIFARE (13.56MHz) and HID (ISOProxII, 125KHz) cards/keychains
- Configurable in Wiegand 26 proximity protocol and 8-bit burst keyboard format.
- Relay (autonomous) 2A (C, No, Nc)
- RF radiated power: 125KHz: 4.382dBuA/m, 13.56MHz: 2.02dBuA/m.

TECHNICAL SPECIFICATIONS

AUTONOMOUS WIRING (with integrated controller)

- ~ (Red): Positive power supply 12~28Vac/dc
- ~- (Grey&black): Negative power supply 12~28Vac/dc
- C (White&black),NO (Blue),NC (Green&black): Potential free relay. C_common, NO_Normally open, NC_Normally closed.
- GND (Black), SP (Brown): door sensor
- GND (Black), BS (Yellow): hallway exit button
- Alarm- (Grey), ~(Red): alarm output <200mA

CENTRALIZED WIRING

- + (Red): Positive 12Vdc power supply
- - (Black): Negative 12Vdc power supply
- DT (D0) (Green), CK (D1) (White): Wiegand26 connection
- G (LED) (Brown): LED control.
- Buzz (Beep) (Yellow): acoustic signal.

Details.

Weight (kg)

0.5443

Packaging measurements

(height x width x depth) cm

5,8x15,6x7,5

Video Door Entry system

Technologie

NO PE/VP

Access Control Technology

COMBINADO

Manuals

- 970030 Teclado prox. resistant REF. 5293 _ 5238
V02_21.pdf

Accessories



F05287

EMBED EXIT BUTTON (SBUTTON 1)



FE01076

MC740 G2 MAGNETIC CONTACT



F04813

P.S.U. DIN6 100-240VAC/12VDC-2A



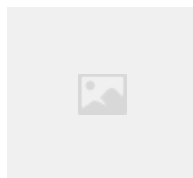
F05276

STAND-ALONE CONTROLLER 1 DOOR
WG



F05288

SURFACE EXIT BUTTON (SBUTTON 5)



F67503

UNIVERSAL LOCK RELEASE 990N-P22
CTC 10-24V MAX