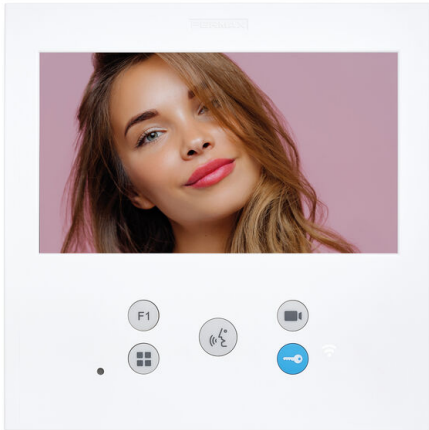


Product Code

F09479

DUOX PLUS VEO-XL WIFI DDA 7" MONITOR



Reference

9479

EAN

8424299094793

Description.

Description

VEO-XL WIFI is equipped **with a Wi-Fi connection that allows the forwarding of calls to mobile devices** . Thanks to the DuoxMe application from Fermax, available for free in the Play Store and App Store, the video door entry functions can be managed directly from a mobile or tablet, to connect you to your home, wherever you are.

VEO-XL hands-free monitor. It is characterized by its thickness, extra-flat. Thanks to its OSD menu and the layout of the buttons, its interaction with the user is simple and intuitive. Made of high impact ABS plastic. Textured finish for easy cleaning and UV protection to make it more resistant to sunlight.

VEO-XL includes a 7 "(16: 9) color widescreen display. Its balanced design with clean lines is distinctive, modern and minimalist. VEO-XL blends into the environment. When a call comes in, the image appears automatically. When the conversation button is pressed, the conversation with the visitor begins. The image disappears automatically after 90 seconds or when the button is pressed again. To open the door, press the key button.

ACCESSORIES:

CONNECTOR

9447 DUOX PLUS MONITOR CONNECTOR

For mounting the monitor on the wall surface.

REPLACEMENT

3389 UNIVERSAL FRAME LARGE 210x240

Extra flat format, made of high impact ABS plastic, it has a fine textured finish. In replacement, it allows to cover the gap left by previous equipment.

Dimensions: 210 x 240 x 10 mm

Technical Details

GENERAL CHARACTERISTICS

- Technology: DUOX PLUS (non-polarised 2 wire full digital system)
- Audio/Video system: Audio/Video Color
- Set-up (Installation): Surface mounted (order connector ref. 9447 separately)
- Desktop support: Yes (ref. 9420)
- Hands-free communication: Yes
- Press-to-talk communication configurable: Yes
- Induction loop: Yes
- Screen dimensions: 7" (Panoramic 16:9)
- Screen resolution (H x V): 800 x 480
- Color of the product: Matt white
- Number of pushbuttons: 5
- Kind of pushbuttons: Mechanical (silicone)
- Number of leds for lighted indications: 3 (red, blue, green with different states)

PROGRAMMING OF THE TERMINAL ADDRESS

- From the terminal: From the OSD menu
- From the outdoor panel or guard unit: Yes
- From the outdoor panel throughout the apartment door bell: Yes

FEATURES

- Automatic picture capture when the visitor calls (PHOTOCALLER): Yes (1 photo/call, until 150 photos, 368 x 288 pixels). This feature can be enabled by the user. Disabled by default.
- Guard unit call: Yes (by means of the door release button)
- Auto-on: Yes (with 3 outdoor panels/cameras)
- OSD menu: Yes
- Additional function F1: Yes (Button F1 sends a negative and/or command)
- Additional function F2: Yes (it only sends command, no negative)
- Apartment door bell differentiated from the outdoor panel: Yes

- Connection for additional devices (call extension, light/buzzer activator, etc.): Yes (ref. 2040, ref. 2438, ref. 3267)
- Additional terminals on the same address: Yes, max. 2 additional terminals (additional power supply can be required)
- Doormatic (automatic door release for offices, etc.): Yes (configurable until 12h). Green Led ON.

ADJUSTMENTS

- Date and time: Yes
- Ring tones selection: Yes (5). Configurable for Block Panel 0, Block Panel 1, General Entrance Panel 0 and Concierge unit.
- Call volume control: Yes (10 levels by OSD menu)
- Do-not-disturb mode: Yes (by OSD menu) + Red led indication
- Audio volume control: Yes (10 levels by OSD menu)
- Brightness, color and contrast control: Yes (by OSD menu)

TECHNICAL FEATURES

- Product dimensions (width x height x depth) mm: 185 x 185 x 24.5
- Time to answer or open the door since the call is done: 30 s.
- Conversation time: 90 s.
- Conversation privacy: Yes
- Voltage: 18-24 Vdc
- Maximum consumption: 9.9 W (18W if the induction loop is activated)
- Standby consumption (paired and connected): 1.5 W
- Working temperature (°C, °F); Humidity: [-5°C, +40°C][23°F, 104°F]; [0%, 90%]
- Line adaptor included in the terminal: Yes (A, C, default position OFF)
- Connections: Bin, Bin, Bout, Bout, -, A+, F1, T

CALL FORWARDING (APP "DuoxMe" FOR SMARTPHONES & TABLETS)

- Call forwarding to smartphones and tablets: Yes
- Connectivity: Wifi (2,4 Ghz)

Details.

Product measurements (height x width x depth) mm	Product height (mm)	Product width (mm)	Product depth (mm)
185 x 185 x 24.5	185	185	24.5
Weight (kg)	Packaging measurements (height x width x depth) cm	Video Door Entry system Technologie	
0.521	19x4,3x19	DUOX	

Manuals

- 970193Ag Monitor VEO XL Wifi DUOX Plus V12_24.pdf
- 970193Eg Monitor VEO XL WiFi DUOX Plus V12_24.pdf
- 970193Eld Monitor VEO XL WiFi DUOX Plus V10_23.pdf
- 970193FAd Monitor VEO XL WiFi DUOX Plus V10_23.pdf
- 970193Fg Monitor VEO XL WiFi DUOX Plus V12_24.pdf
- 970193Ig Monitor VEO XL WiFi DUOX Plus V12_24.pdf
- 970193Pd Monitor VEO XL WiFi DUOX Plus V10_23.pdf
- 970193Pg Monitor VEO XL WiFi DUOX Plus V12_24.pdf
- https://d7rh5s3nxmpy4.cloudfront.net/CMP2008/files/970194d%20Guia%20rap%20monitor%20VEO%20XL%20WiFi%20DUOX%20Plus%20V12_24.pdf, ,

Accessories



F09447

DUOX PLUS CONNECTOR



F02040

ELECTRONIC EXTENSION CALL



F03389

UNIVERSAL FRAME LARGE



F09420

VEO-XS/VEO-XL MONITOR DESKTOP
SUPPORT

Training video

- <https://youtube.com/playlist?list=PLf1YNFmssC37H-1CN64lo6ND28rmVsQit>