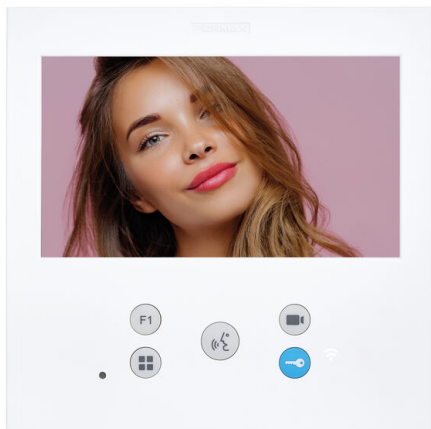


Product Code

F09479

DUOX PLUS VEO-XL WIFI DDA 7" MONITOR



Reference

9479

EAN

8424299094793

Description.

Description

VEO-XL WIFI is equipped **with a Wi-Fi connection that allows the forwarding of calls to mobile devices**. Thanks to the BLUE application from Fermax, available for free in the Play Store and App Store, the video door entry functions can be managed directly from a mobile or tablet, to connect you to your home, wherever you are.

VEO-XL hands-free monitor. It is characterized by its thickness, extra-flat. Thanks to its OSD menu and the layout of the buttons, its interaction with the user is simple and intuitive. Made of high impact ABS plastic. Textured finish for easy cleaning and UV protection to make it more resistant to sunlight.

VEO-XL includes a 7 "(16: 9) color widescreen display. Its balanced design with clean lines is distinctive, modern and minimalist. VEO-XL blends into the environment. When a call comes in, the image appears automatically. When the conversation button is pressed, the conversation with the visitor begins. The image disappears automatically after 90 seconds or when the button is pressed again. To open the door, press the key button.

ACCESSORIES:

CONNECTOR

9447 DUOX PLUS MONITOR CONNECTOR

For mounting the monitor on the wall surface.

REPLACEMENT

3389 UNIVERSAL FRAME LARGE 210x240

Extra flat format, made of high impact ABS plastic, it has a fine textured finish. In replacement, it allows to cover the gap left by previous equipment.

Dimensions: 210 x 240 x 10 mm

Technical Details

GENERAL CHARACTERISTICS

Technology: DUOX PLUS (non-polarised 2 wire full digital system)

Audio/Video system: Audio/Video Color

Set-up (Installation): Surface mounted (order connector ref. 9447 separately)

Desktop support: Yes (ref. 9420)

Hands-free communication: Yes

Press-to-talk communication configurable: Yes

Induction loop: Yes

Screen dimensions: 7" (Panoramic 16:9)

Screen resolution (H x V): 800 x 480

Color of the product: Matt white

Number of pushbuttons: 5

Kind of pushbuttons: Mechanical (silicone)

Number of leds for lighted indications: 3 (red, blue, green with different states)

PROGRAMMING OF THE TERMINAL ADDRESS

From the terminal: From the OSD menu

From the outdoor panel or guard unit: Yes

From the outdoor panel throughout the apartment door bell: Yes

FEATURES

Automatic picture capture when the visitor calls (PHOTOCALLER): Yes (1 photo/call, until 150 photos, 368 x 288 pixels). This feature can be enabled by the user. Disabled by default.

Guard unit call: Yes (by means of the door release button)

Auto-on: Yes (with 3 outdoor panels/cameras)

OSD menu: Yes

Additional function F1: Yes (Button F1 sends a negative and/or command)

Additional function F2: Yes (it only sends command, no negative)

Apartment door bell differentiated from the outdoor panel: Yes

Connection for additional devices (call extension, light/buzzer activator, etc.): Yes (ref. 2040, ref. 2438, ref. 3267)

Additional terminals on the same address: Yes, max. 2 additional terminals (additional power supply can be required)

Doormatic (automatic door release for offices, etc.): Yes (configurable until 12h). Green Led ON.

ADJUSTMENTS

Date and time: Yes

Ring tones selection: Yes (5). Configurable for Block Panel 0, Block Panel 1, General Entrance Panel 0 and Concierge unit.

Call volume control: Yes (10 levels by OSD menu)

Do-not-disturb mode: Yes (by OSD menu) + Red led indication

Audio volume control: Yes (10 levels by OSD menu)

Brightness, color and contrast control: Yes (by OSD menu)

TECHNICAL FEATURES

Product dimensions (width x height x depth) mm: 185 x 185 x 24.5

Time to answer or open the door since the call is done: 30 s.

Conversation time: 90 s.

Conversation privacy: Yes

Voltage: 18-24 Vdc

Maximum consumption: 9.9 W (18W if the induction loop is activated)

Standby consumption (paired and connected): 1.5 W

Working temperature (°C, °F); Humidity: [-5°C, +40°C][23°F, 104°F]; [0%, 90%]

Line adaptor included in the terminal: Yes (A, C, default position OFF)

Connections: Bin, Bin, Bout, Bout, -, A+, F1, T

CALL FORWARDING (APP "BLUE" FOR SMARTPHONES & TABLETS)

Call forwarding to smartphones and tablets: Yes (App Compatible with iOS>=11; Android>=6)

Connectivity: Wifi (2,4 Ghz) and 3G/4G

Pairing of the monitor with the wifi router of the house: Once the App is installed, the user must register first. Pairing by scanning a QR code in the monitor menu.

Maximum number of apartments that can be managed from the App: No limit

Maximum number of smartphones/tablets where call divert from the same house can be used: 10 (including administrator's and invited user's devices)

Maximum number of users that can be invited by the administrator: 5

Calls reception: Audio and Video from outdoor panels/concierge units. With pre-view before audio communication is on.

Conversation time: 90 s.

Mute: Yes

Video off: To reduce the data consumption when being in 4G mode

Switching of outdoor panels/cameras: Yes. It allows for switching to other panels/cameras (if any) with the same sequence than the monitors.

Auto-on: Yes. communication possible with 3 outdoor panels/cameras without being called

Activate additional feature (stairlight relay, second door, etc.): Yes. F1 button.

Door opening: Yes, protected by the unblocking code of the smartphone/tablet: PIN, fingerprint, pattern or face ID.

Concierge call: Yes

Calls register: Yes (answered calls in green; missed calls in red)

Settings: Name and picture of the house; Do not disturb; Change password; Ringtone and vibration mode.

Picture & Video capture: Not from the APP. Only automatically from the monitor

Available languages: 16 (Spanish, English, French, German, Portuguese, Finnish, Czech, Polish, Dutch, Norwegian, Greek, Danish, Swedish, Hebrew, Russian, Arabic)

Details.

Product measurements (height x width x depth) mm	Weight (kg)	Packaging measurements (height x width x depth) cm	Video Door Entry system Technologie
185 x 185 x 24.5	0.521	19x4,3x19	DUOX

Manuals

- 970193Eld Monitor VEO XL WiFi DUOX Plus V10_23.pdf
- 970193FAd Monitor VEO XL WiFi DUOX Plus V10_23.pdf
- 970193Pd Monitor VEO XL WiFi DUOX Plus V10_23.pdf
- 970194c_Guia_rap_monitor_VEO_XL_WiFi_DUOX_Plus_V10_23.pdf
- 970283E_Manual_app_Blue_V12_22.pdf
- 970283I_Manual_app_Blue_V12_22.pdf

Accessories



F09447

DUOX PLUS CONNECTOR



F02040

ELECTRONIC EXTENSION CALL



F03389

UNIVERSAL FRAME LARGE



F09420

VEO-XS/VEO-XL MONITOR DESKTOP SUPPORT

Video

- <https://www.youtube.com/playlist?list=PLf1YNFmssC36V V2J2YHXyjeIRr0u6sool>

Video formativo

- <https://youtube.com/playlist?list=PLf1YNFmssC37H-1CN6 4Io6ND28rmVsQit>