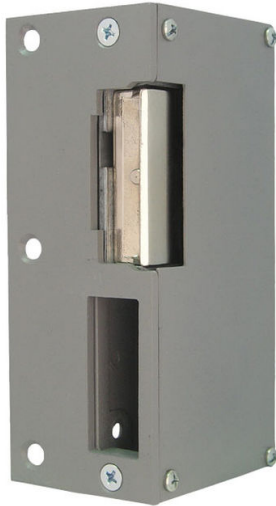


Product Code

FE03005

# LOCK RELEASE MOD.6000A



Reference

3005

EAN

8424299030050

## Description.

---

### Description

#### Surface door lock.

The electric lock release is a device installed in the door frame to control opening remotely using an electronic device. In an electric door entry system installation it is possible to activate the door lock of the building's entrance to allow the entry of the visit directly from the telephone or monitor just by pressing the doorlock key. The doorlock it made up of an electrical mechanisim and a shield if it is flush mounted.

#### Serie 6000

**Surface with deadbolt recess.**Surface door lock with attachment concealed on frame, reversible, for doors with locks with latch/bolt.Does not allow inverted operation or MAX version.

#### Reversible (Right DIN or Left DIN).

Lets you open the door from right and left.

#### Symmetrical.

Allows to change hands, maintaining the body symmetry.

#### DIN STANDARD

establishes the direction the door opens and designates the type of lock release installed.

Looking at the door from the side with the hinges visible:

- If the hinges are to the left of the observer, it is a left DIN lock release.
- If the hinges are on the observer's right, it is a right DIN.

### Operating type.

There are several types of door lock release mechanisms depending on the type of operation needed.

#### Type A Automatic 12Vac (Automatic operation and 12 Vac activation).

The lock release is unblocked when it receives a 12Vac voltage pulse. The lock release is blocked again once the voltage is cut off and the door opens and closes again mechanically. For proper installation, the automatic lock pin must be pressed in 3mm by the latch once the door is closed again.

### Technical Details

#### Consumption:

- N, A 12Vac: 980mA
- N-412 12Vdc: 200mA.
- N-512 12Vdc: 150mA.

### Details.

Product measurements (height x width x depth) mm	Product height (mm)	Product width (mm)	Product depth (mm)
132(V)x51,4(H)x62(P)	132	51.4	62

Weight (kg)	Packaging measurements (height x width x depth) cm	Video Door Entry system
0.598	5,5x13,5x6,5	Technologie GENERICA

### Accessories



F02013

ADDITIONAL FUNCTIONS RELAY



F05287

EMBED EXIT BUTTON (SBUTTON 1)



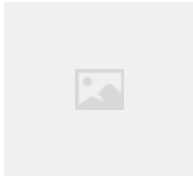
FE01076

MC740 G2 MAGNETIC CONTACT



F04802

P.S.U. DIN4 230VAC/12VAC-1A



F03491

RELAY CARRIL DIN 12 VDC 12A



F05288

SURFACE EXIT BUTTON (SBUTTON 5)

### Dimension image

