

Product Code

FE30938

LOCK RELEASE 300AD-412-S
MAX

Reference

30938

EAN

8424299309385

Description.

Description

Flush mounted Door lock.

The electric lock release is a device installed in the door frame to control opening remotely using an electronic device. In an electric door entry system installation it is possible to activate the door lock of the building's entrance to allow the entry of the visit directly from the telephone or monitor just by pressing the doorlock key. The doorlock it made up of an electrical mechanisim and a shield if it is flush mounted.

Universal

This door lock release is made up of a UNIVERSAL electric mechanism which dimensions are:

104(V)x20(H)mm, if MAX version the size of the body changes to 91(V)mm. Flush mounted in wooden and metal frames.

Characteristic robust design and low power consumption.

Reversible (Right DIN or Left DIN).

Allows to open the door from right and left.

Non-symmetrical.

Allows to change hands while taking into account that the body does not keep symmetry with the change from RIGHT DIN to LEFT DIN.

DIN STANDARD

establishes the direction the door opens and designates the type of lock release installed.

Looking at the door from the side with the hinges visible:

- If the hinges are to the left of the observer, it is a left DIN lock release.
- If the hinges are on the observer's right, it is a right DIN.

Operating type.

There are several types of door lock release mechanisms depending on the type of operation needed.

A-412 type Automatic 12Vdc. (Automatic operation and 12 Vdc activation)

The lock release is triggered automatically when it receives a 12Vdc pulse. The lock release is blocked again once the voltage is cut off and the door opens and closes again mechanically. For proper installation, the automatic lock pin must be pressed in 3mm by the latch once the door is closed again.

D Unblocking

The door release includes a manual unblocking lever which inhibits its function, allowing free access.

Max Adjustable Latch:

The lock release includes an adjustable latch, allowing a perfect fit between latch and deadbolt in the lock, with a 4mm margin. It avoids door leaf pressure on the lock release latch bolt.

S type flush shield.

For access doors.

S type grey metallic trim fitted with an electrical mechanism to form a flush-fit lock release.

Dimensions: 25(H)x160(V) mm.

Technical Details

Consumption:

N, A 12Vac: 980mA

N-412 12Vdc: 200mA.

N-512 12Vdc: 150mA.

N-424 24Vdc: 120mA.

Details.

Product measurements (height x width x depth) mm	Weight (kg)	Packaging measurements (height x width x depth) cm	Video Door Entry system Technologie
90,8(V)x20(H)x28(P)	0.278	3,4x16,3x2,7	GENERICA

Accessories



F02013

ADDITIONAL FUNCTIONS RELAY



F05287

EMBED EXIT BUTTON (SBUTTON 1)



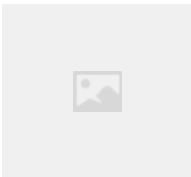
FE01076

MC740 G2 MAGNETIC CONTACT



F04813

P.S.U. DIN6 100-240VAC/12VDC-2A



F03491

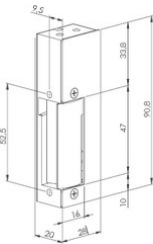
RELAY CARRIL DIN 12 VDC 12A



F05288

SURFACE EXIT BUTTON (SBUTTON 5)

Dimension image



Wiring diagram (image)

