

12/W COLOUR DUOX VIDEO CITY KIT



Reference: 49728

DUOX is the new digital technology that exceeds all expectations because it makes the difficult easy.

DUOX is the **first fully digital Smart System in 2-wire non-polarized technology** for audio and...

DESCRIPTION

DUOX is the new digital technology that exceeds all expectations because it makes the difficult easy.

DUOX is the **first fully digital Smart System in 2-wire non-polarized technology** for audio and video door entry. It is the most technologically advanced system worldwide, allowing fast installation with just two wires.

It is a technological revolution destined to change our notions of audio and video door entry systems. Because it provides better performance and capacities, greater simplification and speed. But above all, because it takes us to a new dimension, where information (audio, video, data) becomes digital material which is transported using just two non-polarized wires.

With DUOX we are deploying a **digital platform** in homes which, as well as offering significant improvements for today, can serve as **the basis for innovation tomorrow**.

DUOX KITS only require two non-polarized wires for its installation keeping the maximum quality in product and design, simplifying the installation of door entry systems of up to 24 apartments.

Building Video KITS from 3 to 24 ways are supplied with all necessary material for a complete video installation (except monitors and connectors).

TECHNICAL SPECIFICATIONS

Includes:

- 70138. 5CP206 DUOX CITY Panel. S5: 130x246.
- 8855. Kit flush box S5: 115x233x45.
- 2441. 16-Calls extension module.
- 3255. Line termination (2un.).
- 3244. Power supply adaptor module.
- 4802. Power Supply 12Vac/1A. DIN4.
- 4812. Power Supply 18Vdc/1,5A

Video

- Resolution: QVGA(320x240 pixels).
- Sensor: 1/3" color CMOS.
- Effective pixels: 1M.
- Minimum external illumination: 0,5 lux.
- SNR >40dB.
- Frame rate 25 fps.
- Auto iris.
- Auto BLC.
- View angle 90° H, 72°V.

FERMAX

- Color night vision through white led.

Weight: 2,901394 kg

Size of product when packed: 27x25x7,5 cm

EAN 13: 8424299497280

Included products

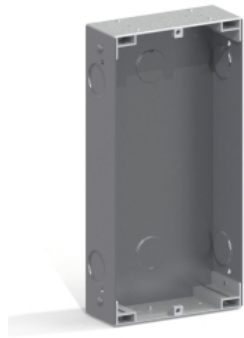


**CITY PANEL DUOX
COLOUR S5 CP 206**

Ref: 70138

New Cityline Panel: CityLine is the "continuous profile" outdoor panel line for buildings. This new panel model is more robust, more luxurious and...

[+ INFO](#)

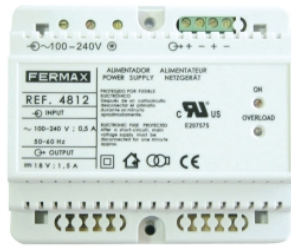


CITY FLUSH BOX S5

Ref: 8855

In order to install a panel it is necessary to place a box in the wall where we will subsequently fix the panel. The flushboxes are manufactured in...

[+ INFO](#)



**P.S.U. DIN6 100-
240VAC/18VDC-1,5A**

Ref: 4812

Used to power the different equipment in a Fermax installation.

Constructed in self-extinguishing VO material. Includes a set of covers to protect the...

[+ INFO](#)



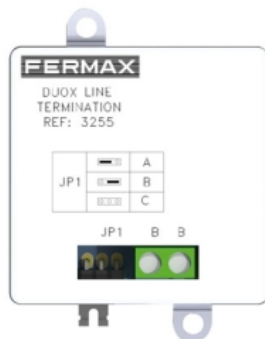
**P.S.U. DIN4
230VAC/12VAC-1A**

Ref: 4802

Used to power the different equipment in a Fermax installation.

Constructed in self-extinguishing VO material. Includes a set of covers to protect the...

[+ INFO](#)



DUOX LINE ADAPTOR

Ref: 3255

For DUOX systems it will be necessary to install a line adaptor device. Its function is to adapt the transmission line and it includes a jumper to...

[+ INFO](#)



DUOX FILTER

Ref: 3244

DIN-4 rail format for easy installation inside an electrical equipment box, or can be screwed directly onto the wall.

[+ INFO](#)



**16 CALL EXTENSION
MODULE**

Ref: 2441

Call extension modules for City VDS and MDS panels. They are installed in the flush-fit box.

[+ INFO](#)